



INSTALLATION & MAINTENANCE MANUAL

**HCxx**





## GENERAL INSTRUCTIONS

These instructions should be read carefully and retained after installation by the end user for future reference and maintenance.

These instructions should be used to aid installation of the following products:  
HCBC / HCC / HCW

## SAFETY

- This product must be installed in accordance with the latest edition of the IEE Wiring Regulations (BS7671) and current Building Regulations. If in any doubt, consult a qualified electrician
- Please isolate mains prior to installation or maintenance
- Allow 50mm above and around the product for air dissipation (do not cover with insulation)
- This product is for indoor use only
- This product is either Class I and must be earthed or Class III depending on the choice of lampholder
- This product is IP20 rated

## INSTALLATION

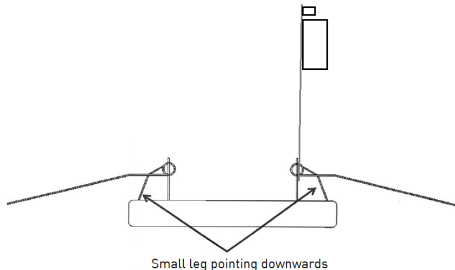
- The following instructions assume an existing cut-out of diameter from 78 to 120mm
- If cutting a hole, ensure not to infringe with any joists, gas/water pipes or electrical cables
- Choose which lampholder to use, either the 12V MR16 or the 230V GU10, and fit this to the secondary side of the terminal box, replacing the existing if necessary
- If using the 230V GU10 lampholder, connect the terminal box to the mains supply ensuring the correct polarity is observed: L - Live (brown), E - Earth (green/yellow), N - Neutral (blue)
- If using the 12V MR16 lampholder, connect the terminal box to the secondary side of the 12V transformer or driver (not included) in either polarity. The earth terminal must not be connected
- Separate the fitting from the outer part of the hole converter by pulling downwards from the middle





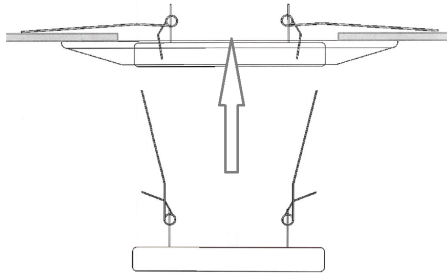
- Offer the outer part of the hole converter to the ceiling and pass the terminal block and bracket through
- Hold the bracket with the "H" shaped hole over the same shaped hole in the side of the fitting, with the terminal box facing away from the centre of the fitting
- Still holding the bracket in place, grip one of the retaining springs and squeeze the coils together with the short leg facing downwards
- Hook the coils of the spring into the middle of the "H" shaped holes so that the fitting and bracket are held together (see Fig. 1)

**Fig. 1**



- Fix the other spring into the other side of the fitting in the same manner
- Holding the outer part of the hole converter in position, pass the terminal box through the centre, hold the long legs of the springs upwards and pass them through the hole, keeping the short legs downwards (see Fig. 2)





**Fig. 2**

- As the fitting is pressed into position in the centre of the plate, the long legs will engage with the top surface of the ceiling, and the short legs will engage with the inner surface of the outer ring
- Remove the circlip fitted into the lamp aperture in the bottom of the fitting
- Fit a suitable lamp, max. 50W (not included)
- Insert the lamp into the centre of the fitting and replace the circlip
- Switch on and check for correct operation

## GENERAL

Clean with a soft dry cloth only, do not use aggressive cleaning products or solvents which may damage the product.

This product is dimmable dependent on lamp type.

This product should be recycled in the correct manner when it reaches the end of its life. Check local authorities for where facilities exist.

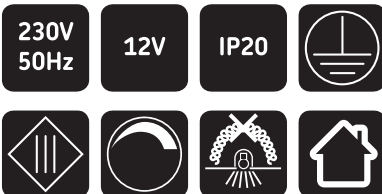




## WARRANTY

This product has a warranty of 1 year from date of purchase. Failure to install this product in accordance with the current edition of the IEE Wiring Regulations (BS7671), improper use, or removal of the batch code will invalidate the warranty. If this product should fail within its warranty period, it should be returned to the place of purchase for a free of charge replacement. ML Accessories does not accept responsibility for any installation costs associated with the replacement product. Your statutory rights are not affected. ML Accessories reserve the right to alter product specification without prior notice.





ML Accessories Limited LU5 4LT  
[www.mlaccessories.co.uk](http://www.mlaccessories.co.uk)

DCMAY21\_V2

