

INSTALLATION & MAINTENANCE MANUAL  
KIT16

---



## GENERAL INSTRUCTIONS

These instructions should be read carefully and retained after installation by the end user for future reference and maintenance.

These instructions should be used to aid installation of the following products:

KIT16W, KIT16B, KIT16WW

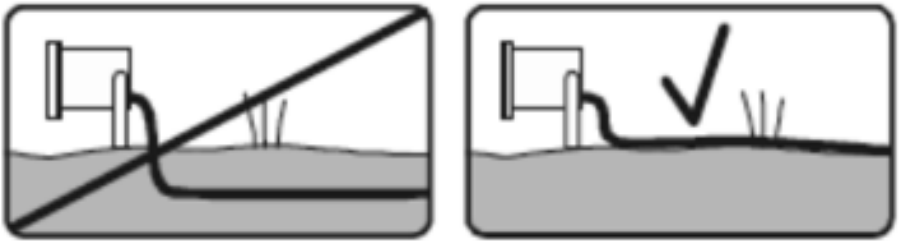
## SAFETY

- This product must be installed in accordance with the latest edition of the IEE Wiring Regulations (BS7671) and current Building Regulations. If in any doubt, consult a qualified electrician
- Please isolate mains prior to installation or maintenance
- Check the total load on the circuit (including when this load is fitted) does not exceed the rating of the circuit cable, fuse or circuit breaker
- Please note the IP (Ingress Protection) rating of this product when deciding the location for installation
- This product series is IP65 rated
- This product is Class II double insulated

# INSTALLATION

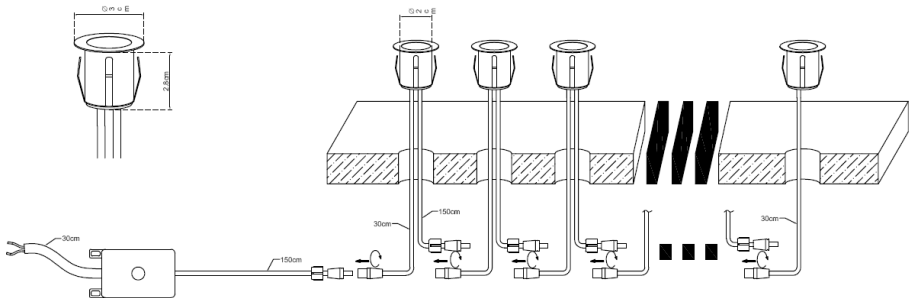
Note: If this luminaire is being used in conjunction with external PIR or sensors, please confirm with the manufacturer of the sensors that they are compatible with the lamp source

- Cut suitable 25mm holes in the mounting surface ensuring that they do not infringe with electrical cables or water/gas pipes
- Provide power to the required point of installation (refer to BS7671 for correct cabling methods). Suitable IP rated junction boxes should be used where required ensuring the power source is via an RCD or an RCBO
- The pre-installed cable supplied is for above-ground use only. Cables that are to be routed within walls or below ground must be protected by means of suitable conduit or trunking (see Fig. 1)



**Fig. 1**

- Feed the pre-installed cables through the holes and connect with the pre-installed plugs and sockets (see Fig. 2)



**Fig. 2**

- When installing into decking, ensure there is enough clearance below so the fitting, cable, and driver are not sitting in standing water
- Connect the cable from the secondary side of the driver to the first light in the installation with the male and female plugs and sockets then connect remainder of the fittings in sequence
- Connect the cable from the primary side of the driver to a suitable power source ensuring correct polarity is observed (Live (brown), Neutral (blue))
- Switch on power supply and check for correct operation

## WARNING

This product must be disconnected from the circuit if subjected to any high voltage or insulation resistance testing. Irreparable damage will occur if this instruction is not followed.

## GENERAL

This product is unsuitable for installation in or near coastal and marine environments.

The product should be recycled in the correct manner when it reaches the end of its life. Check local authorities for where facilities exist.

Clean with a soft dry cloth only, do not use aggressive cleaning products or solvents which may damage the product.

A light film of acid free oil is recommended after installation and maintained periodically (2-3 times a year) to aid corrosion prevention

Note: the drainage below the luminaire should be able to drain the water away within 30 minutes

Do not use any source of high pressure washers to maintain or clean this product.

This product is non-dimmable

Driver supplied

This product has a cut-out of 25mm

## WARRANTY

This product has a warranty of 3 years from date of purchase. Failure to install in accordance with the current edition of the IEE Wiring Regulations, improper use, or removal of the batch codes will invalidate the warranty. If this product should fail within its warranty period it should be returned to the place of purchase for a replacement. ML Accessories does not accept responsibility for any installation costs associated with the replacement product. Your statutory rights are not affected. ML Accessories reserve the right to alter product specification without prior notice.



**ML Accessories Limited**  
**LU5 4LT**

[www.mlaccessories.co.uk](http://www.mlaccessories.co.uk)

AKNOV18\_V2