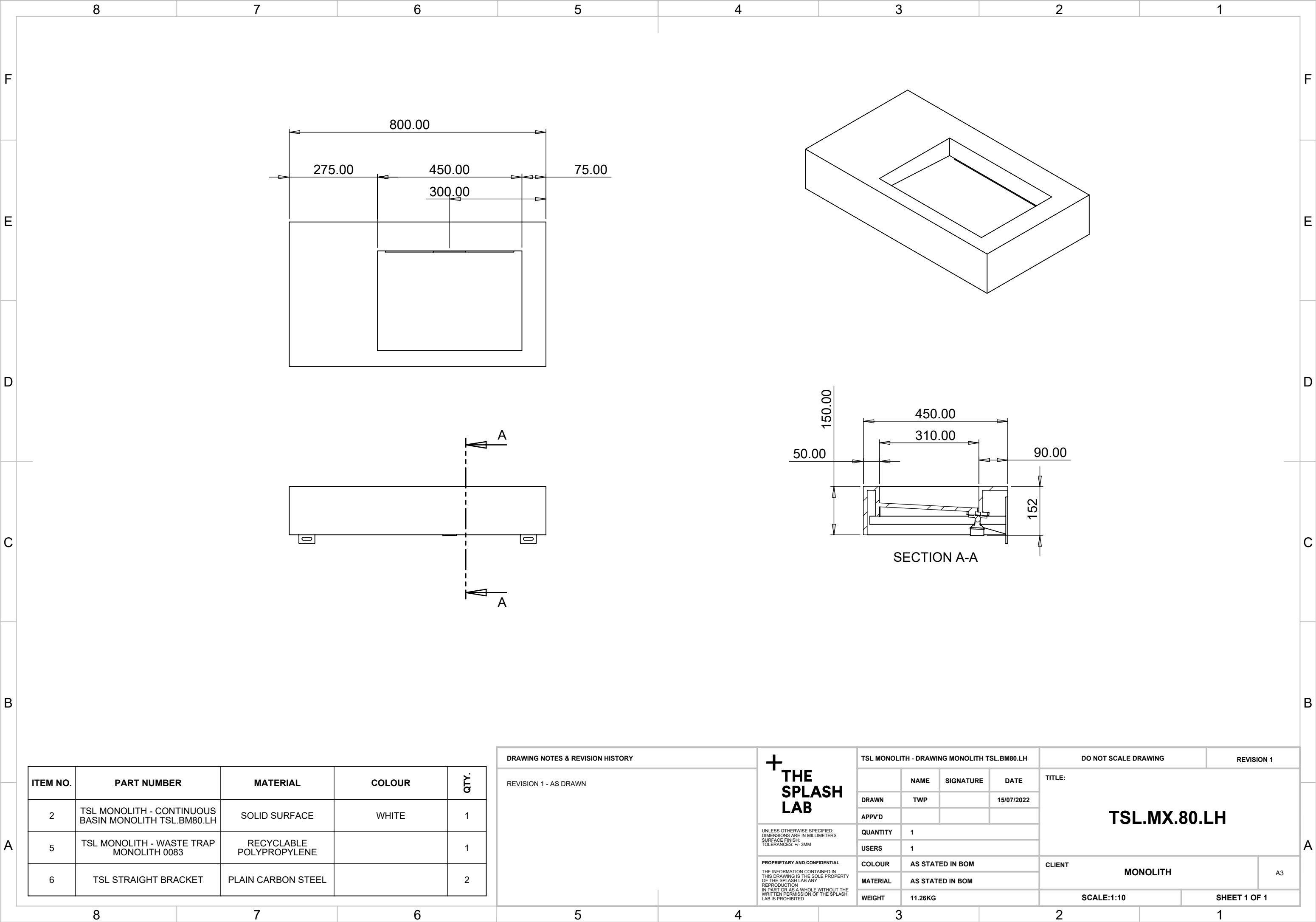
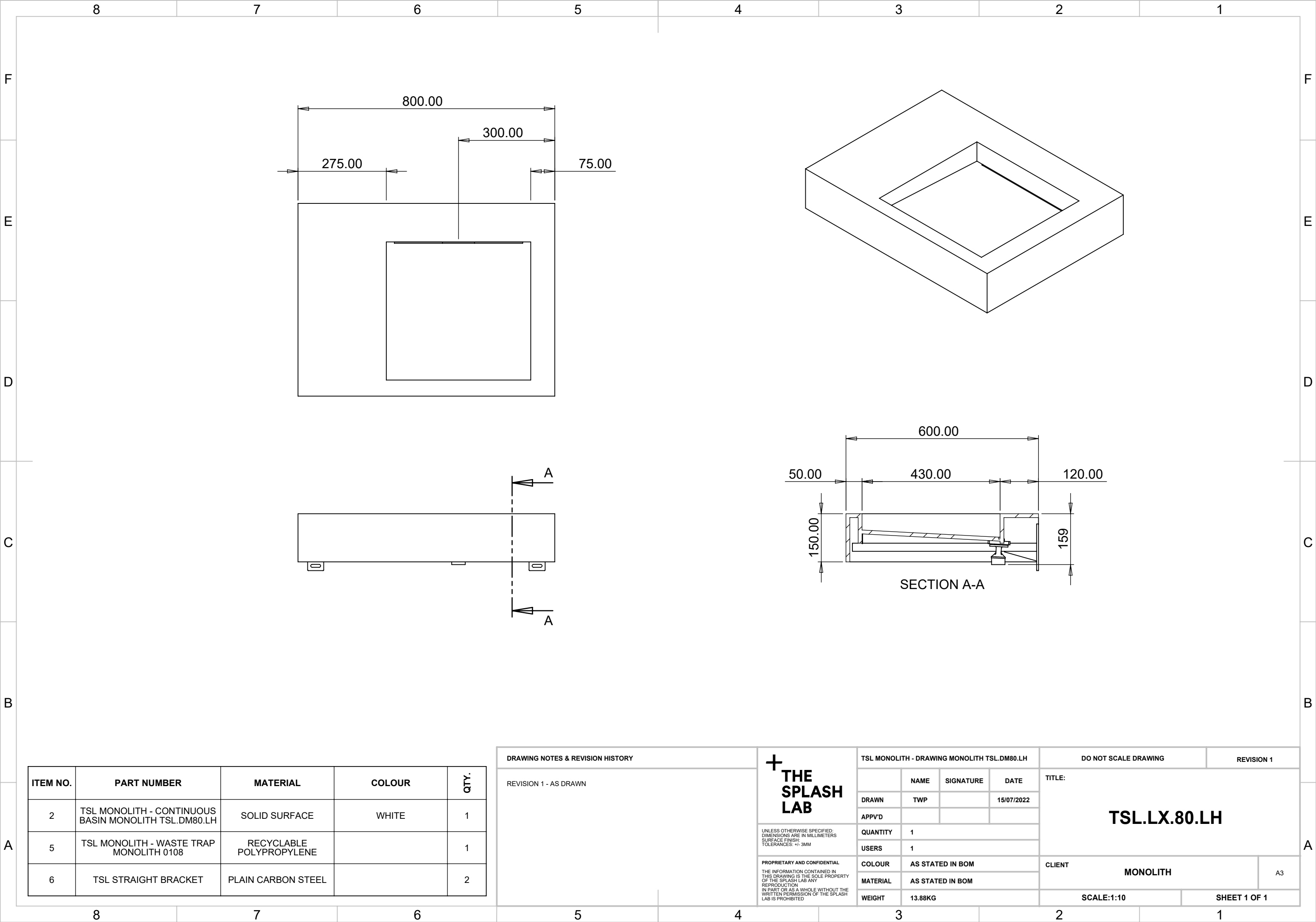


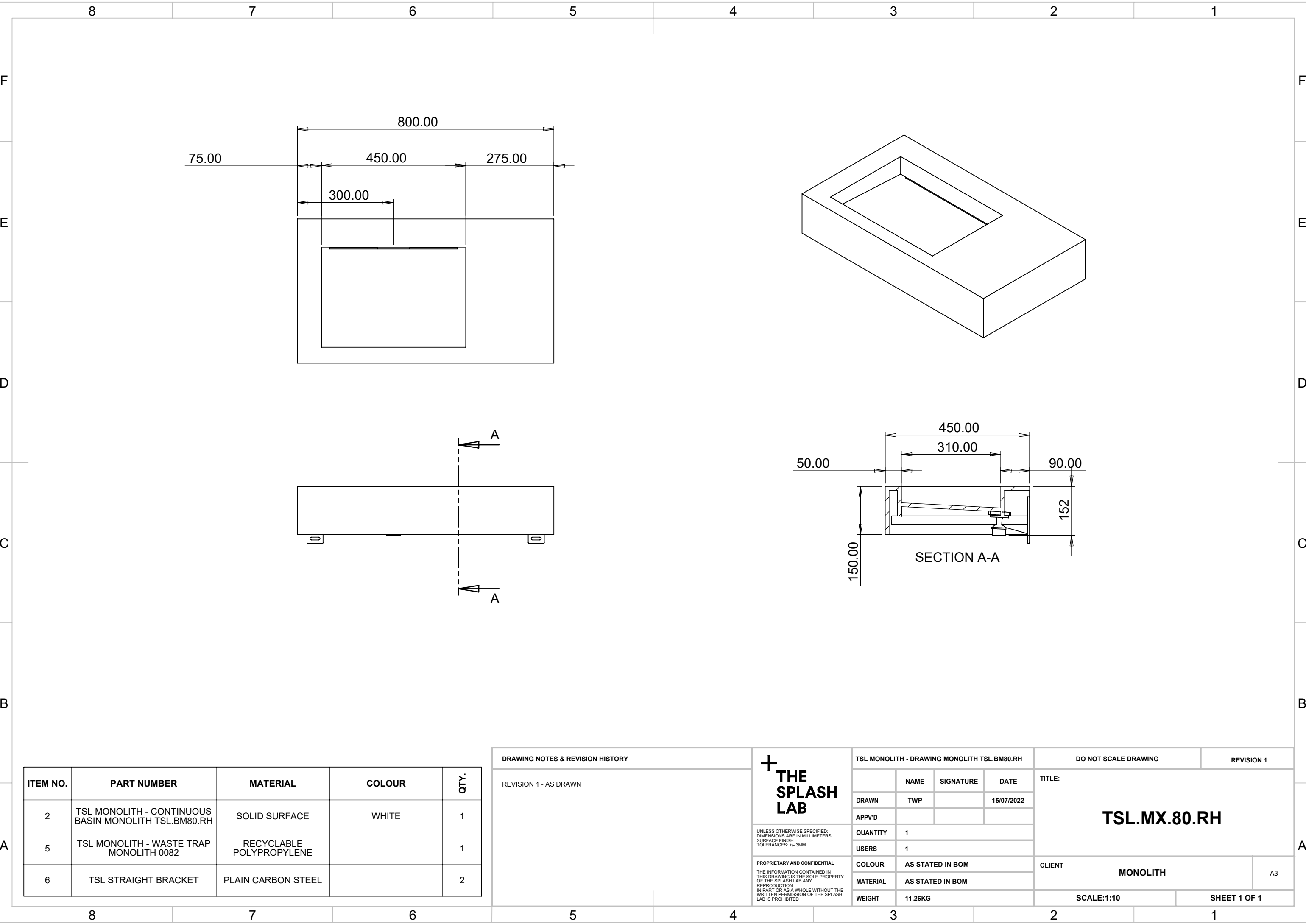
# Intelligent

**The trusted independent experts for hand dryers  
and washrooms since 2012.**









ITEM NO.	PART NUMBER	MATERIAL	COLOUR	QTY.
2	TSL MONOLITH - CONTINUOUS BASIN MONOLITH TSL.BM80.RH	SOLID SURFACE	WHITE	1
5	TSL MONOLITH - WASTE TRAP MONOLITH 0082	RECYCLABLE POLYPROPYLENE		1
6	TSL STRAIGHT BRACKET	PLAIN CARBON STEEL		2

DRAWING NOTES & REVISION HISTORY		<div><div><div></div></div><div>THE SPLASH LAB</div></div> <div>UNLESS OTHERWISE SPECIFIED: DIMENSIONS ARE IN MILLIMETERS SURFACE FINISH: TOLERANCES: +/- 3MM</div> <div>PROPRIETARY AND CONFIDENTIAL THE INFORMATION CONTAINED IN THIS DRAWING IS THE SOLE PROPERTY OF THE SPLASH LAB ANY REPRODUCTION IN PART OR AS A WHOLE WITHOUT THE WRITTEN PERMISSION OF THE SPLASH LAB IS PROHIBITED</div>		TSL MONOLITH - DRAWING MONOLITH TSL.BM80.RH				DO NOT SCALE DRAWING		REVISION 1		
REVISION 1 - AS DRAWN					NAME	SIGNATURE	DATE	TITLE:  TSL.MX.80.RH				
				DRAWN	TWP		15/07/2022					
				APPV'D								
				QUANTITY	1							
		USERS	1			A3						
		COLOUR	AS STATED IN BOM									
		MATERIAL	AS STATED IN BOM									
		WEIGHT	11.26KG			SCALE:1:10		SHEET 1 OF 1				

