

Intelligent

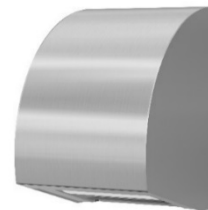
**The trusted independent experts for hand dryers
and washrooms since 2012.**





Stainless Design Toilet Roll Holder 277

Holds 1 standard roll
Hygienic and durable
2-year warranty



Exclusive toilet roll holder for one standard size roll. The dispenser is made with easy access, ensuring quick and easy replacement of the toilet roll. Stainless Design is a complete product line for commercial toilets, in which quality and aesthetics are paramount. The entire stainless product line is made of strong quality materials, featuring unique design with a beautifully arched housing in brushed stainless steel.

Application

This small toilet roll holder is ideal for public lavatories when you don't compromise on quality and aesthetics even in small rooms. The compact size makes it a perfect choice for private homes too. The Stainless Design product line combines hygiene and durability with classic elegance to suit any commercial bathroom. The products are designed specifically for use in public toilets where low-maintenance is called for, and equipment must be able to withstand rough treatment.

References

Offices and administration, private homes, restaurants, sport clubs, public institutions and cultural centres.

Technical data

| | |
|------------|--|
| | Stainless Design |
| | Prod. No. 277 |
| Type | Toilet roll holder |
| Dimensions | H 200 x W 143 x D 142 mm/front open: 200 mm |
| Material | 1.5 mm brushed stainless steel AISI 304 |
| Capacity | 1 standard size roll |
| Net weight | 1.85 kg |

Standard colour

Brushed stainless steel

Variants

Also available in all RAL colours.

Installation

Wall mounting.

Tender text

Toilet roll holder in 1.5 mm brushed stainless steel AISI 304. Capacity: 1 standard size toilet paper roll. Net weight: 1.85 kg.
H: 200 x W 143 x D 142 mm/open front: 200 mm.