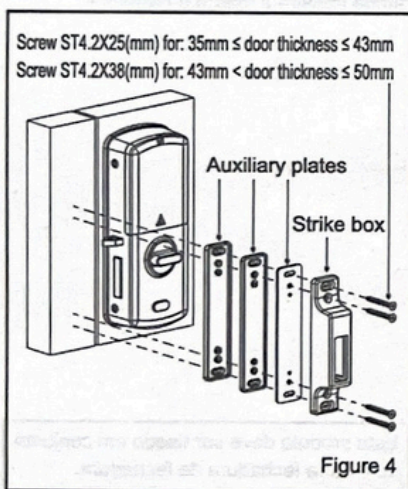
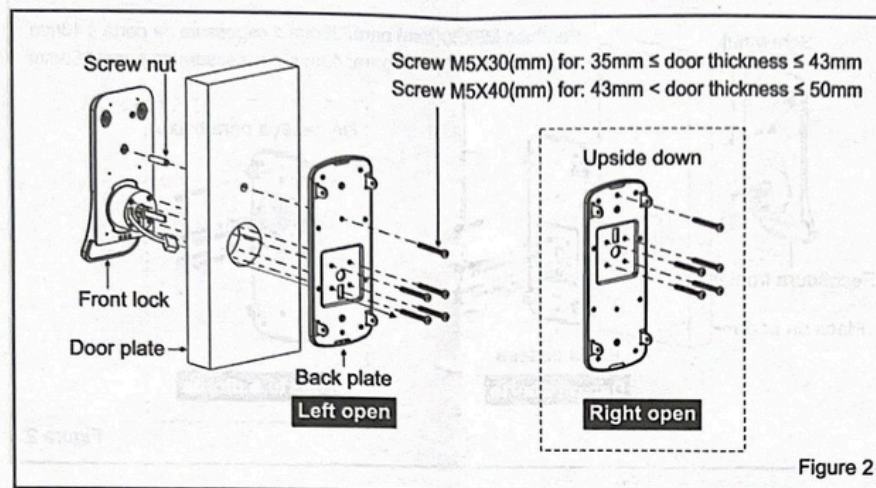


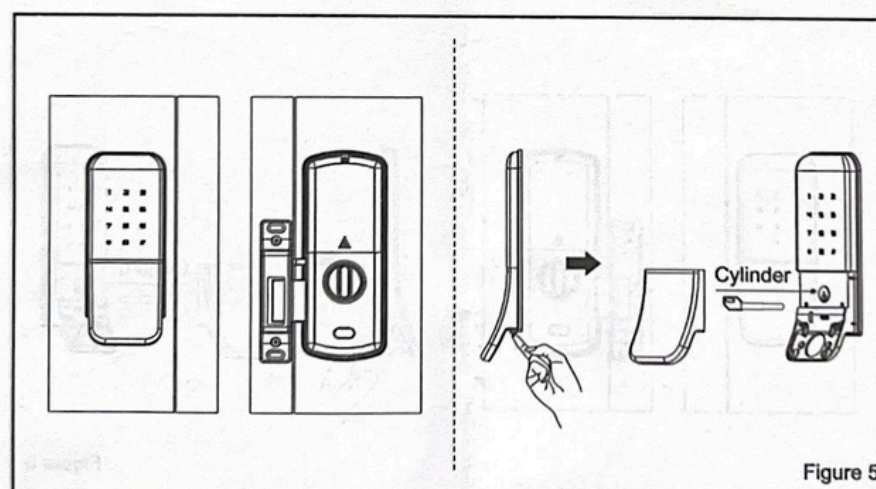
(1) As figure 1, Measure your door thick.
If 43 < door thickness ≤ 50 mm, no need to change Lock plate.
If 35 ≤ door thickness ≤ 43 mm, pls unscrew and change the shorter Lock plate, then fix the screw back.



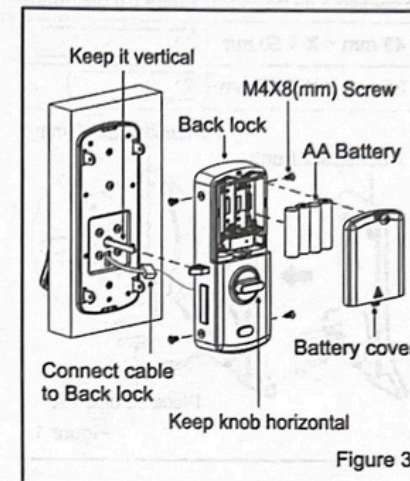
(4) As figure 4, Install strike box with 4 screws.
(You can add/decrease auxiliary plates to adjust the strike box so that to align with the deadbolt.)



(2) As figure 2, Fix screw nut on Front lock, install Front lock and Back plate on door with 5 screws.
Note: Figure 2 is Left open instruction, if you want to install as Right open, please turn the back plate upside down.



(5) As figure 5, Turn the knob to check if deadbolt work smoothly. Press the button (at the bottom) of the Front lock and take out the cylinder cover, use manual key to open and close the lock and check if deadbolt work smoothly.



(3) As figure 3, Connect cable to Back lock, keep the lock plate vertical, and keep the knob horizontal. Use 4 screw to fix the Back lock on Back plate. (If door is Right open, please turn the back lock upside down) Loosen the screw of battery cover and take off the cover. Install batteries, put back cover, fasten the screw.

This product should be used together with another deadbolt lock.