

User Manual For DL1 series



IMPORTANT SAFETY INSTRUCTIONS

Please read the following safety instructions to prevent any accident, property damage and inconvenience. Children should be well educated for the operating instruction. Keep this manual in a convenient place so that you can refer to it when necessary.

**Caution** Must be followed to protect yourself and your property.

**Note** Explains product functions and features.

Prohibited

Must observe

This manual is applicable for all DL1 series product, if your lock doesn't have some of the function mentioned below, please disregard.

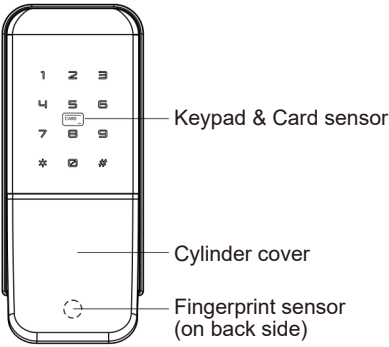
1 Specifications

Parts	Specifications	Remarks
Master code	Set function, unlock	Maximum 5 masters, ID:1~5
Master fingerprint	Set function, unlock	
Master card	Set function, unlock	
User code	Unlock/lock	DL1 maximum 15 pin-codes ID:1~15 DL1/ DL1 Pro maximum 50fingerprints, 30 cards, 20pin-codes ID:1~95
User fingerprint	Unlock/lock	
User card	Unlock/lock	
Remote control button	Unlock/lock	

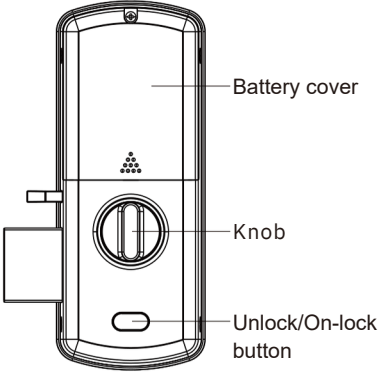
※Optional products may not be available depending on your country or local dealer.  
※ Compatible with Mifare S50, and Mifare S50 key fob.  
※ Key-in \* to get back or clear the prior digits.  
※ Scramble code function: Random digits +User/Master password+ Random digits +# (number of digit is unlimited, if the last input 20 digits include correct pin-code, it will unlock)

2 Identification of Product

1. Front (Front Body, install on the outside of the door)

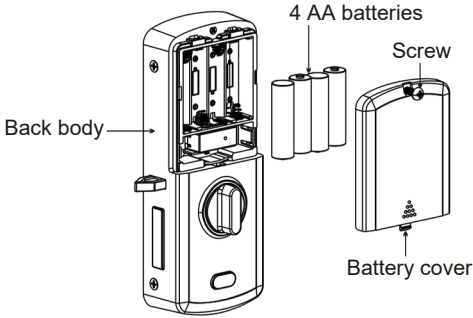


2. Back (Back Body, install on the inside of the door)



3. Install Battery

Loosen the screw on battery cover (the screw can't be taken out), take off battery cover, install 4 AA batteries.



3 How to Use

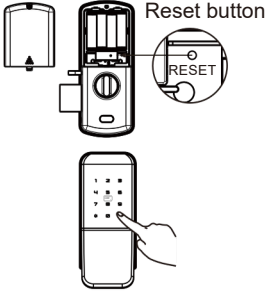
1.Reset the lock

1. Use a stick to press the reset button and hold.
2. Till you hear:

The Second Beep—Audio

- [System initialization, please confirm]
3. Key-in #.

Restore factory setting successfully.



Note

- After restoring the default setting:
- It will clear all the fingerprints, cards, pin-codes, remote control button in the lock.
  - The door lock can be unlocked by any unregistered fingerprint / card, and master code would be restored back as 1234. In order to ensure security, the master code should be changed soon as possible to exit the default state.

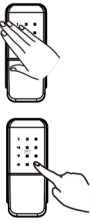
2. Change Master info (After Reset The Lock)

1. Touch the Keypad to wake up lock.
2. Enter \* + 0 + # (or press reset button).
3. Enter Master code(default 1234) + #.
4. Enter 10 + #.
5. Enter new Master code + #.
- 6.Repeat code + #.



3. Register Master

1. Touch the Keypad to wake up lock.
2. Enter \* + 0 + # (or press reset button).
3. Enter Master fingerprint/card/code + #.
4. Enter 11 + #.
5. Enter Master info (fingerprint/ card/ code).

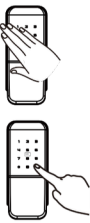


Note

- The keypad will display the ID (1-2 digit) of Master/ User after registered. You can change specific Master or delete specific User by enter the ID in the future.

4. Register User

1. Touch the Keypad to wake up lock.
2. Enter \* + 0 + # (or press reset button).
3. Enter Master fingerprint/card/code + #.
4. Enter 21 + #.
- 4.1 Register User Code.  
Enter new User Code + #.
- Repeat User Code + #.
- 4.2 Register User Fingerprint.  
Scan a new Fingerprint (Remove and put finger for 4 times).
- 4.3 Register User Card.  
Scan a new Card.



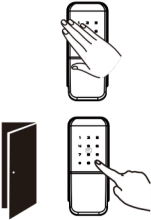
5. How to lock the door

Under Automatic lock mode

- 1.Auto on-lock when door is closed.

Under Manual lock mode

1. Close the door.
  2. Enter \* \* to lock up.
- OR
- Turn the knob to lock up.
- OR
- Press the unlock/lock button to lock up.



6. Other Function setting

After registering Master, you can follow below setting pattern to do other setting with function code. If your lock doesn't have some of the function mentioned below, please disregard.

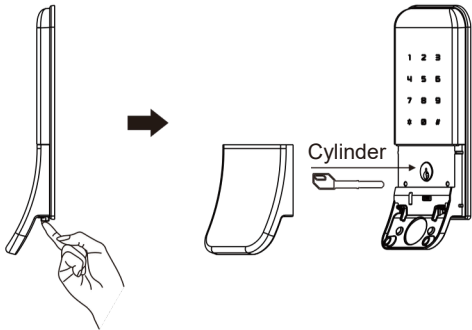
Set Function Code  
Wake up Keypad, Enter \* + 0 + #.  
↓  
Input/Verify master.  
↓  
Enter Function code #.

Function Code	Description
10	Change Master (fingerprint/card/code)
11	Register Master (fingerprint/card/code))
111-115	Register specific ID master (ID: 1-5)
121-125	Delete specific ID master (ID: 1-5)
211-2195	Register specific ID user(ID: 1-95)
221-2295	Delete specific ID user(ID: 1-95)
821	Set audio to high volume
822	Set audio to low volume
832	Set audio in English
95	Check Battery status

4 ⚠ Caution

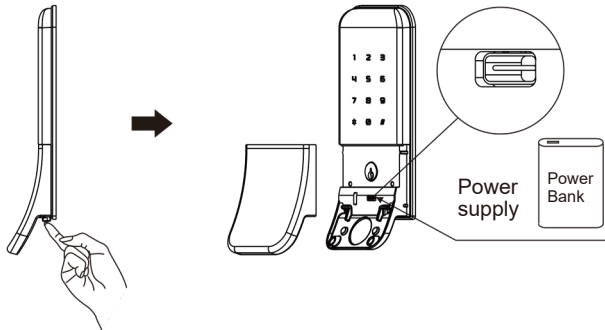
1. Emergency manual key override

When it happen that all password/fingerprint/card cannot open the lock, please press the button(at the bottom)of the Front lock and pull out the cylinder cover, use manual key to unlock.  
●At least 1 manual key should be well stored somewhere else (For example in a car).



2. Emergency power supply

In case of power extremity, please press the button (at the bottom) of the Front lock and pull out the cylinder cover, connect to power bank with USB Type-C cable, then unlock with fingerprint/card/code.



3. Wrong-try alarm and lock-out

When using incorrect password/fingerprint/card or verification failed for 5 times in a row, the lock will start alarm and lock-out all operation for 3 minutes(when lock-out remain 3 min the lock will indicate digit 3, when it's 2 min remain. it will indicate digit 2) .

4. Latch alarm

When the door is not completely closed, the lock will continuously beep for 100 seconds to remind you.

