



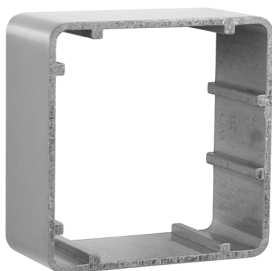
# SURFACE BOXES

# EXIT BUTTONS



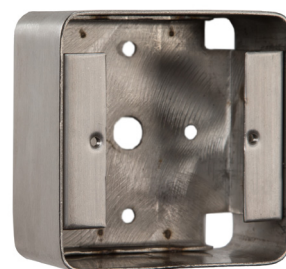
**EXTR02**

Aluminium extrusion  
85Hx85Wx38D (mm)  
Includes adj single gang box (35mm)



**EXTR03**

Aluminium extrusion  
85Hx85Wx38D (mm)



**SSBB02**

Stainless steel back box  
85Hx85Wx42D (mm)



**PBB05/BK**

40mm back box  
Available in black or green



**PBBSHR/BK**

Shrouded plastic back box  
40mm deep (Shroud is 50mm deep)



**PBBJMB/BK**

Jamb style back box - black  
120Hx50Wx47D (mm)



**SSBB03**

Stainless steel back box  
For use with EBLPP02  
118Hx118Wx36D (mm)



**PBB03/BK**

Plastic back box  
For use with EBLPP02  
128Hx128Wx36D (mm)

## OTHER PRODUCTS

**PBBSHR/GN**



**PBB04/GN**



**PBB02/BK**



Manufactured by a BSIA Member