

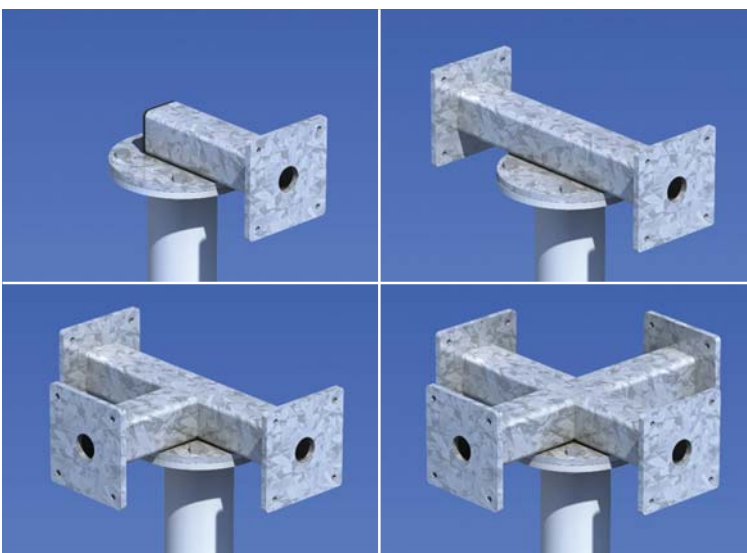
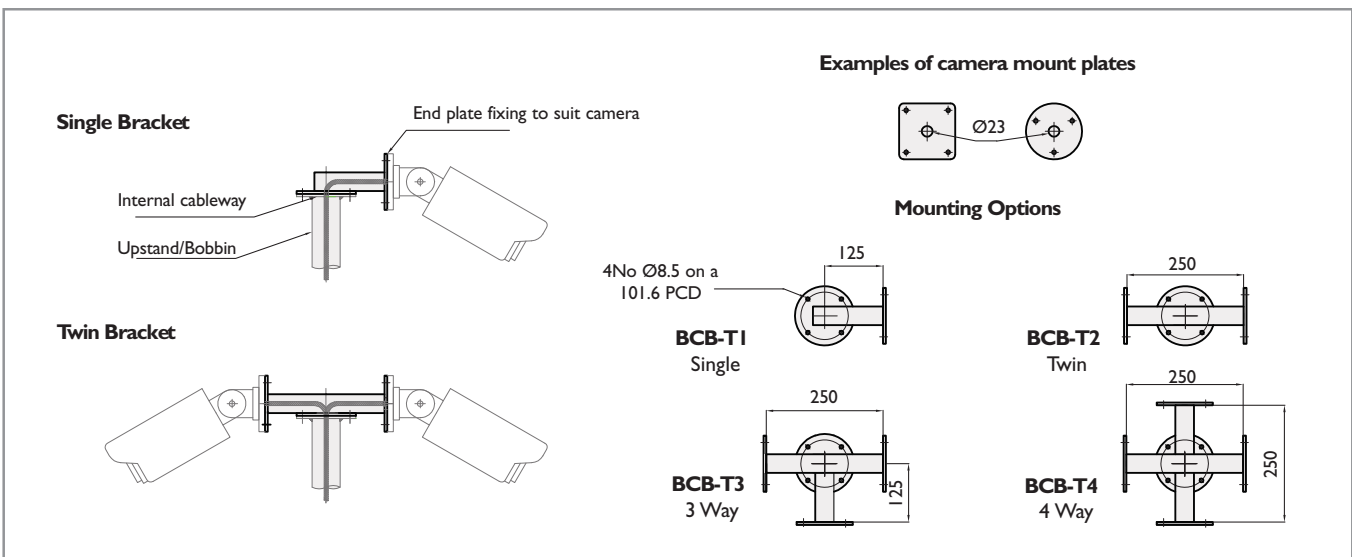
BCB-T: Top Mount - Bullet Camera Brackets



Altron Bullet Camera Brackets are a simple and cost-effective way of mounting Bullet Cameras on top of all Altron pole, tower and column products.

They can be provided for any Bullet Camera, just specify the camera make and model number when ordering.

Cableway allows internal cabling through bracket and mounting top plate, enabling a neat, secure installation



Part numbers

Specify camera make and model when ordering

- BCB-T/1 1-way top mount bracket
- BCB-T/2 2-way top mount bracket
- BCB-T/3 3-way top mount bracket
- BCB-T/4 4-way top mount bracket

Construction/ finish

- Produced in high tensile steel
- Hot dip galvanised for longevity
- Painted or powder coated finishes on request

Notes

- Max load rating 10kgs per mounting position
- Also available as a pole clamp 'PMB' type bracket