



B-TECH AV MOUNTS™

ADJUSTABLE
 CEILING DROP

BT8420

ADJUSTABLE DROP FLAT SCREEN CEILING MOUNT

Designed to ceiling mount screens up to 25kg, the BT8420 features an adjustable drop of 625mm - 950mm in increments of 25mm. The mount is suitable for screens with VESA patterns up to 200mm x 200mm. Locking screws are included to help prevent unauthorised removal of the screen. Cover plates are supplied for a neat and tidy installation.

SPECIFICATION

Recommended screen size	up to 47"
Max Load	25kg
VESA® compatibility	up to 200 x 200
Screen tilt	+ / - 40°
Ceiling drop	Min. 600mm - Max. 1000mm*
Colour	Black

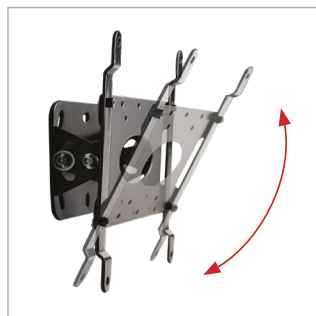
*From the ceiling to the centre of the mount

FEATURES

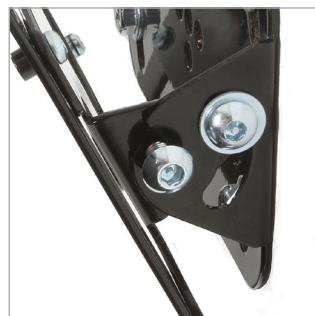
- Fits screens with VESA mounting patterns: 75 x 75mm, 100 x 100mm, 200 x 100mm and 200 x 200mm
- Easy tilt adjustment
- Tool-less adjustable ceiling drop in increments of 25mm
- Includes security locking screws and Allen key to prevent unauthorised removal of the screen
- Suitable for landscape or portrait mounting
- Integrated cable management
- Simple 'hook-on' installation with all mounting hardware included



Quick and easy 'push button' height adjustment



Easy tilt adjustment



Security locking screws provided



Simple 'hook-on' installation

