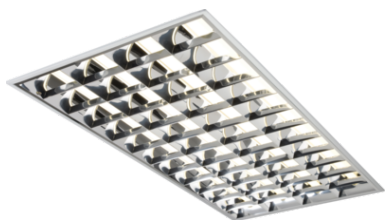


DATASHEET



MRA436EMHF

230V IP20 4x36W T8 HF Emergency CAT2 Modular Fluorescent Fitting 600x1200mm

www.mlaccessories.co.uk

| | |
|--|---|
| MLA PART CODE | MRA436EMHF |
| DESCRIPTION | 230V IP20 4x36W T8 HF Emergency CAT2 Modular Fluorescent Fitting 600x1200mm |
| NET WEIGHT (KG) | 6.75 |
| FINISH | White |
| DIMENSIONS (MM) | Length - 1195 Width - 595 Recessed Depth - 86 Minimum Void - 136 |
| CONSTRUCTION | Construction - Steel |
| CLASS | I |
| IP RATING | IP20 |
| MAX. WATTAGE (W) | 4x36 |
| LAMP TECHNOLOGY | Fluorescent |
| LAMP BASE | T8 |
| LAMP INCLUDED | No |
| LED COMPATIBLE | No |
| DIMMABLE | No |
| EMERGENCY | Maintained / Non-maintained / Switched |
| INPUT VOLTAGE | 230V 50Hz |
| DRIVER | EFFICIENCY FULL LOAD - 91 |
| BATTERY TYPE | Ni-Cad |
| BATTERY INCLUDED | Yes |
| WARRANTY | 1year(s) |
| WARRANTY INFORMATION | (excluding battery) |
| MANUFACTURED IN ACCORDANCE WITH | BS EN 60598 |
| ORIGIN OF MANUFACTURE | China |
| DECLARATION OF CONFORMITY (HELD ON FILE) | Yes |
| EAN | 5055559101888 |

Date Created: 27/02/2025 00:30