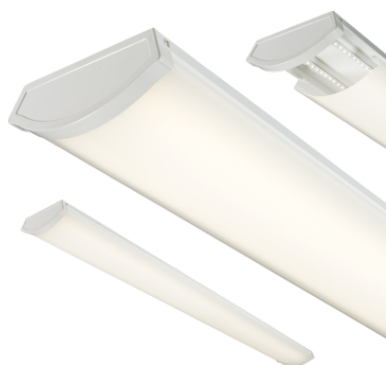


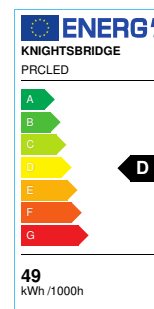
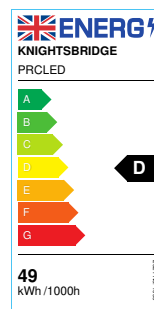
DATASHEET



PRCLE

230V IP20 5ft 49W LED Surface mount

www.mlaccessories.co.uk



MLA PART CODE	PRCLE
DESCRIPTION	230V IP20 5ft 49W LED Surface mount
NET WEIGHT (KG)	2.83
FINISH	White
DIFFUSER	Opal
DIMENSIONS (MM)	Length - 1490 Width - 198 Projection - 68
CONSTRUCTION	Construction - Pressed steel Construction 2 - & polycarbonate
CLASS	I
IP RATING	IP20
WATTAGE (W)	49
LAMP TECHNOLOGY	LED
LAMP INCLUDED	Yes
LUMENS (LM)	6110
LUMENS LIGHT SOURCE ONLY (LM)	7750
LUMEN TOLERANCE	5%
EFFICACY (LM/W)	155
CIRCUIT WATTAGE (W)	50.5
CCT	4000K
LIGHT COLOUR	Cool White
CRI	>80
SDCM	<6
RUNNING CURRENT (A)	0.228
DISPLACEMENT FACTOR	>0.9
SVM	0.81
PST-LM	0.037
BEAM ANGLE (DEGREES)	120
LIFE SPAN (HRS)	30,000

L70B50 LIFESPAN (HRS)	50,000
DIMMABLE	No
OPERATING TEMPERATURE	-15~45°C
INPUT VOLTAGE	230V 50Hz
DRIVER	DRIVER TYPE - Constant Current MAX. OUTPUT - 50W OUTPUT VOLTAGE - 29-43V OUTPUT CURRENT - 1200mA POWER FACTOR - 0.95 EFFICIENCY FULL LOAD - 88.76 ISOLATION - SELV AMBIENT TEMPERATURE (Ta) - -15~45°C CASE TEMPERATURE (Tc) - 70°C
WARRANTY	5year(s)
MANUFACTURED IN ACCORDANCE WITH	BS EN 60598
ORIGIN OF MANUFACTURE	China
DECLARATION OF CONFORMITY (HELD ON FILE)	Yes
EAN	5055832971016

Date Created: 27/02/2025 11:41

