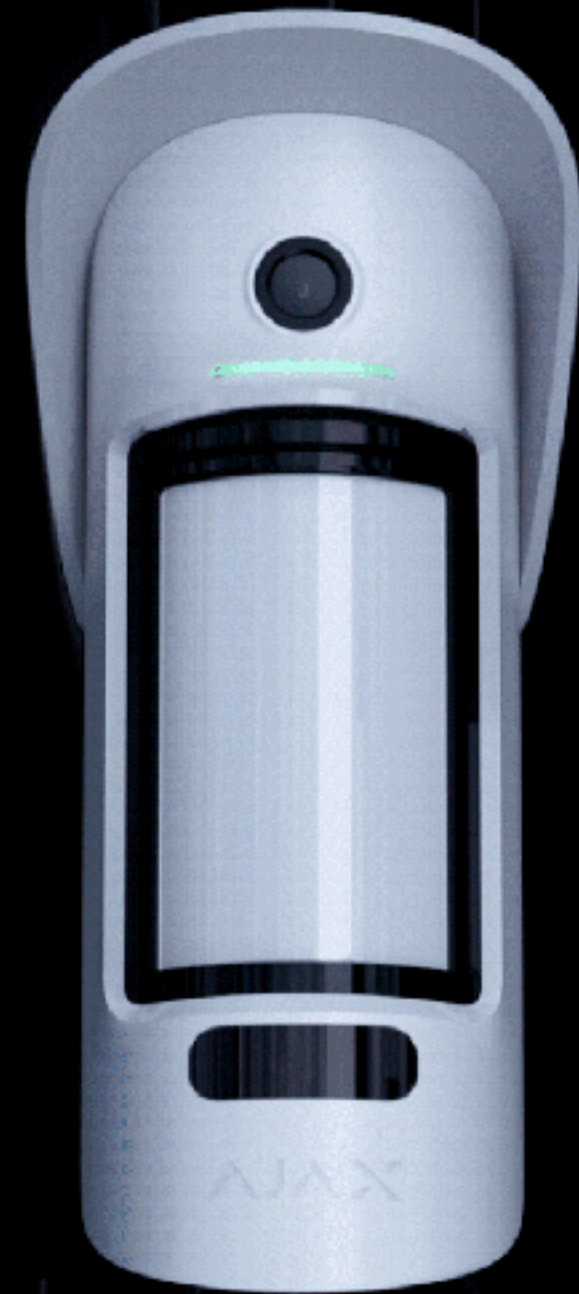
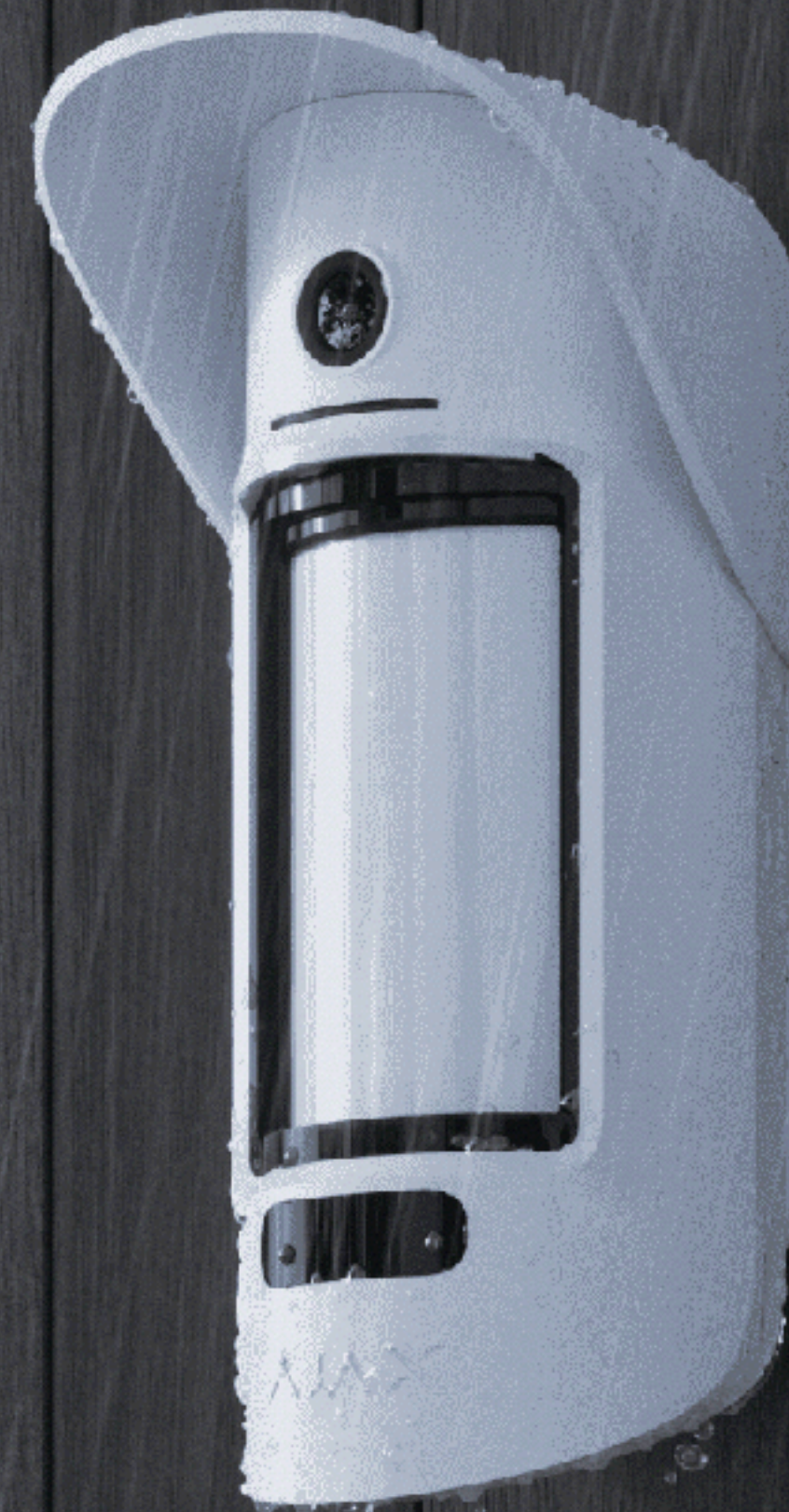


AJAX




MotionCam Outdoor


Wireless outdoor motion detector with a photo camera to verify alarms




 Night vision

 175 m² detection area

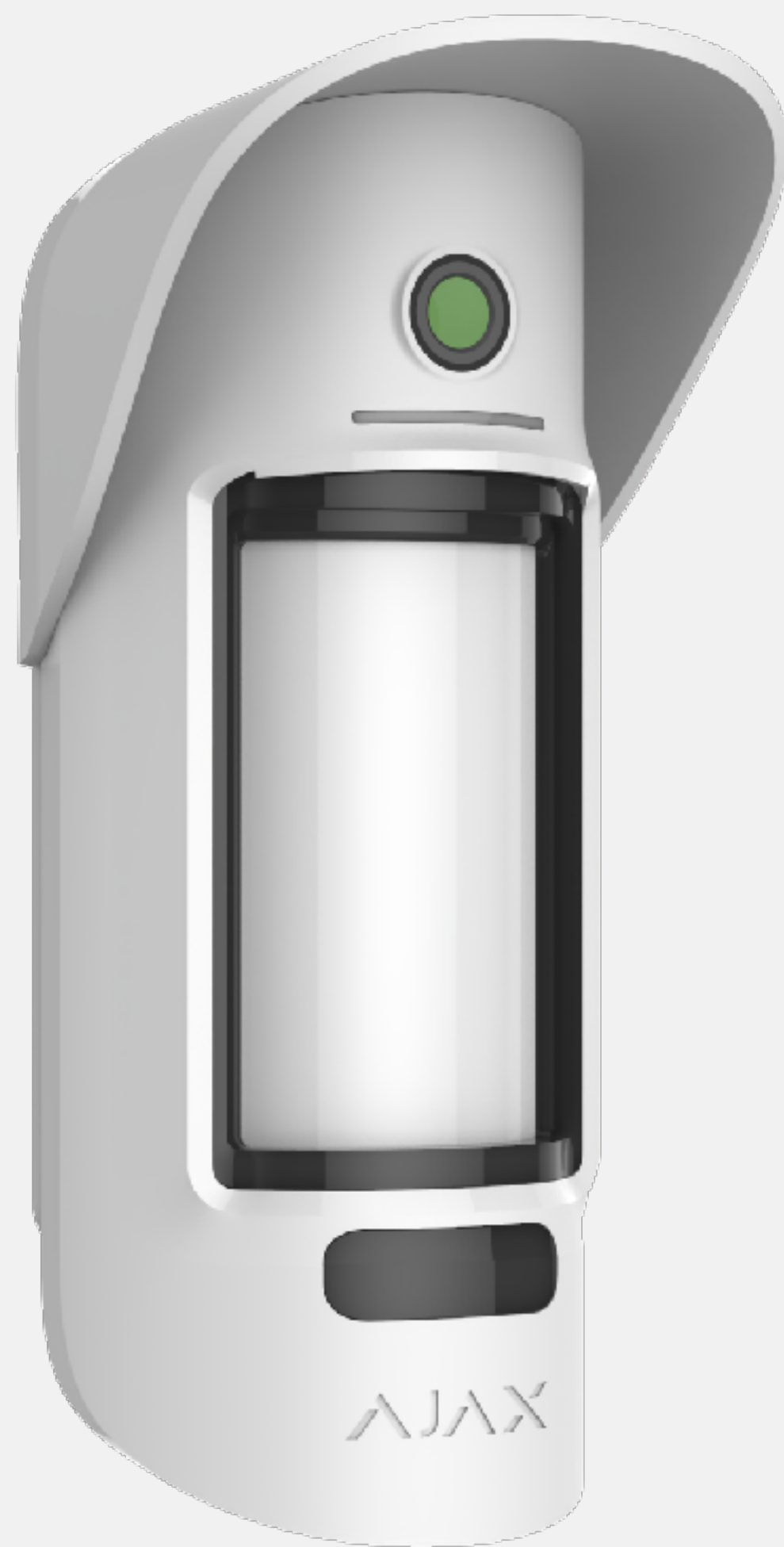
 Advanced pet immunity

 Dust and splash protection

 Hood included



Lightning-fast alarms. Verified



Motion detected



Alarm raised



Evidence captured

Compatible with **Hub 2** и **Hub 2 Plus**.
Not compatible with **ReX**



Jeweller Wings

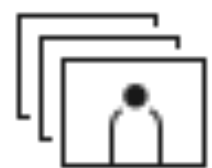


Transmission of alarms in **0.15 s**

Photo delivery in less than **9 s**

Two-way communication at a distance of up to **1 700 m**

Advanced antisabotage protection



1-5 pictures in a series



Photo resolution up to 640x352 pixels



Up to 3 years of battery life



informative pictures under all conditions

Combining the best optics, fast processor and advanced software algorithms, MotionCam Outdoor takes informative pictures **in any weather, day or night.**



Glass Lens

HDR camera
for clear photos

IR backlight to make
photos in the dark



Camera designed to guard

- Waterproof lens out of glass and metal.
- The wide-angle lens covers the entire protected area.
- In bright light, an **infrared filter** is automatically applied to ensure distortion-free color reproduction.
- **Two bright IR LEDs** help to see the intruder even in total darkness.

Clear and sharp image that confirm intrusion in seconds and allow security companies to react in time

IR backlight



Photo from MotionCam Outdoor



Photo without IR backlight



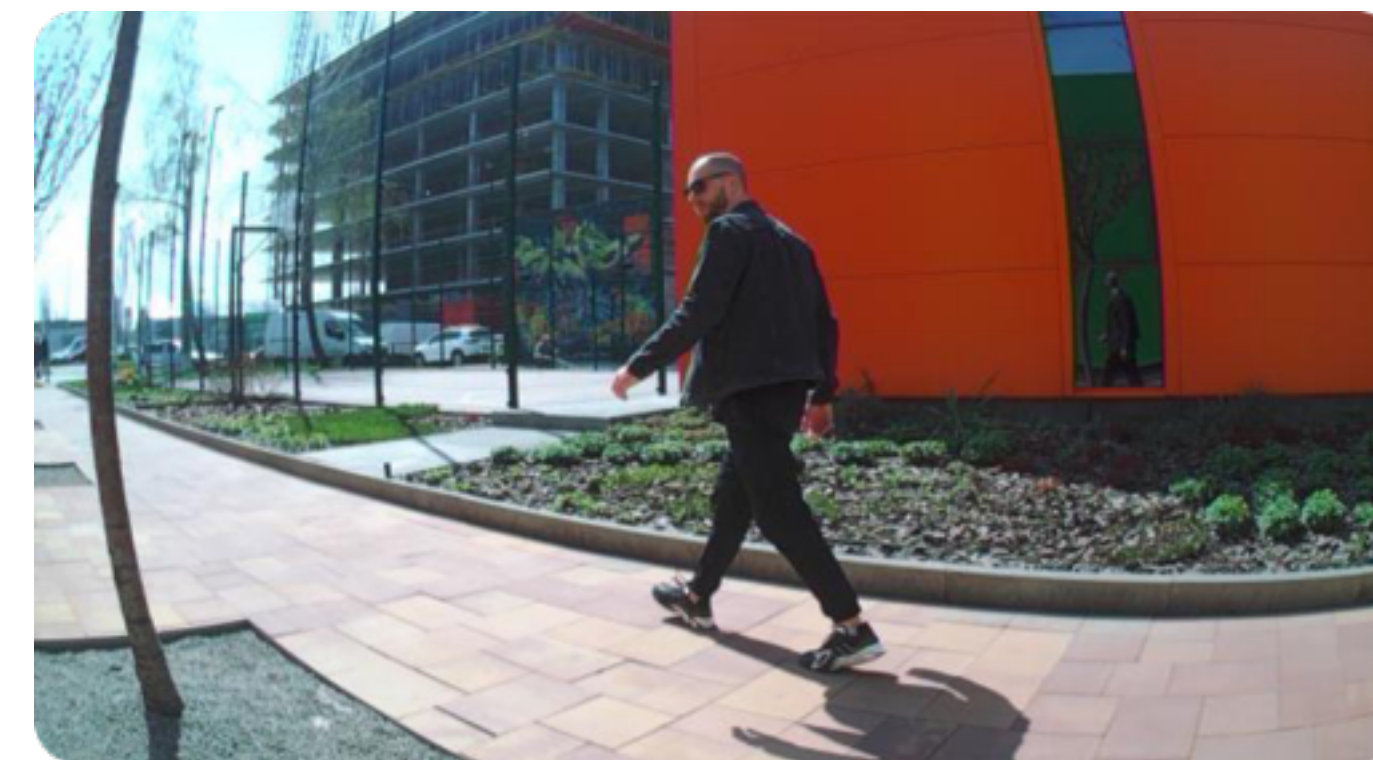
Camera designed to guard

To take one photo, a camera takes **two consecutive shots** at long and short exposures.

The processor instantly combines the shots, equalizing the balance between light and dark areas of the image, and then compresses it for the fastest transmission.

Thanks to the HDR, the detector uses less IR backlight at night and saves battery

HDR - камера



С HDR



Без HDR



Intelligent false alarm filter

Detector is equipped with two independent PIR sensors, the signals of which are analyzed by a **two-step LISA algorithm**.

When both sensors detect motion, LISA performs **correlation and spectral analysis of the signals**.

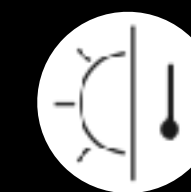
Signal analysis with intelligent LISA algorithm helps to instantly distinguish real threats from interferences



Live
Intelligent
Spectrum
Analysis



Pet immunity for animals
up to 80 cm tall



Filtering sun glints and hot
air streams

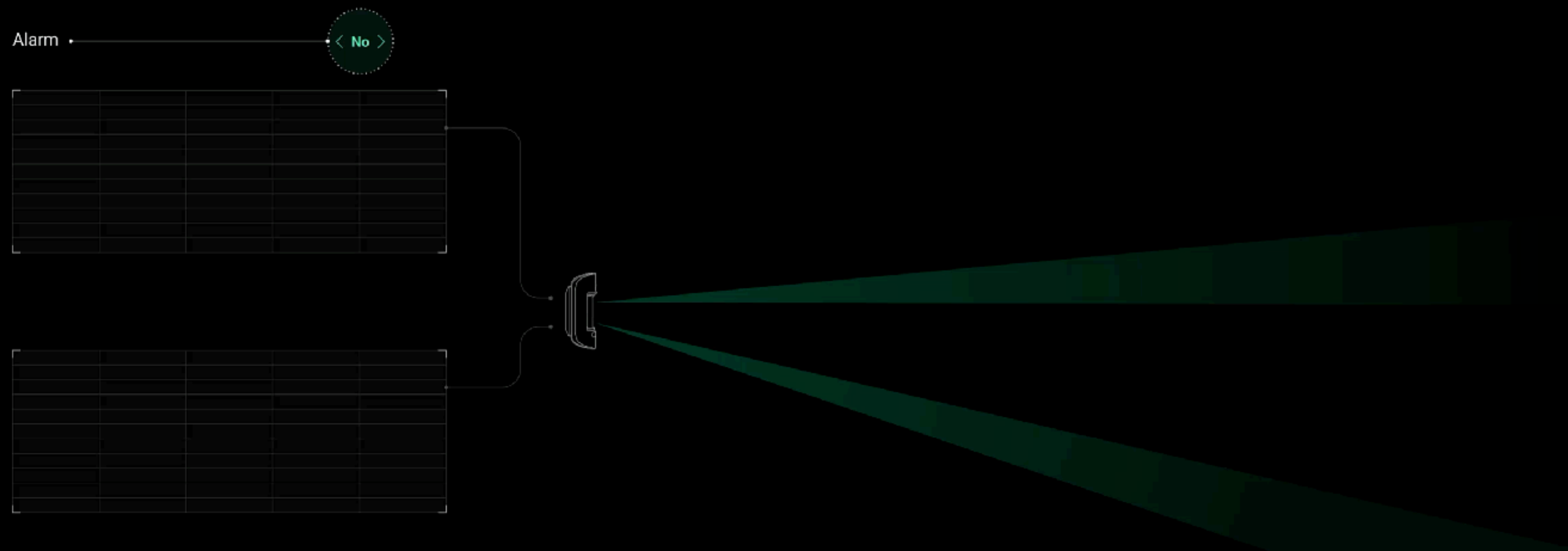


Intelligent false alarm filter

Correlation analysis

Whenever MotionCamOutdoor detects motion, LISA analyses and compares signal forms from two sensors in real-time.

If forms are similar, the alarm is activated.



Live
Intelligent
Spectrum
Analysis



Intelligent false alarm filter

Spectral analysis

When both sensors detect motion, but the correlational analysis doesn't identify enough similarities, LISA compares frequency components in the signals of both sensors.



Live
Intelligent
Spectrum
Analysis



Effective security in any weather

Resists the heat and cold from -25°C to $+60^{\circ}\text{C}$, and to protect the sensors of the anti-masking system from rain and snow, a special hood is included.



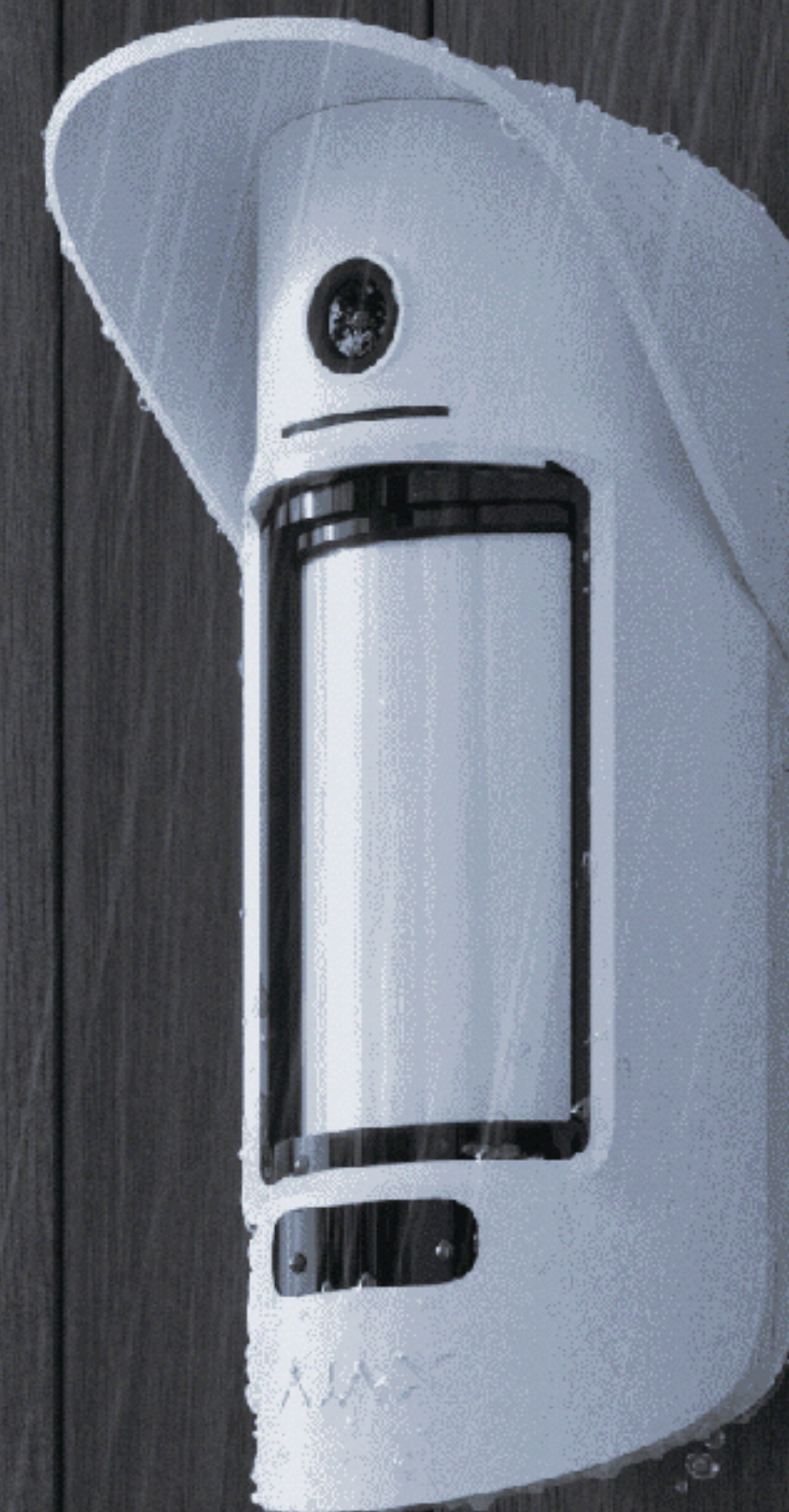
Efficiency in heat and cold



IP55 enclosure protection



Bundled hood to protect from rain and snow



$+60^{\circ}\text{C}$



-25°C



Effective security in any weather

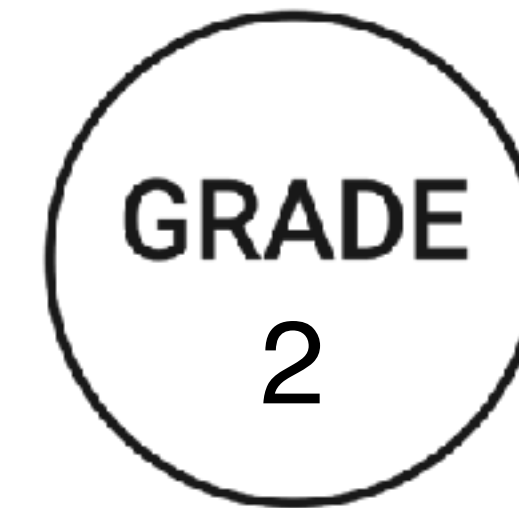




Multilevel anti-sabotage protection

- The detector is equipped with **masking sensors** reacting to hindering, covering and painting the lens.
- It will take the hub < 1 minute to detect the loss of communication.
- The fact that the detector was dismantled will become known instantly.

MotionCam Outdoor can not be unnoticeably disabled even if the system is disarmed



EN 50131

< 1 minute
to detect the hub-detector
communication loss



Multilevel anti-sabotage protection



Anti-masking system



Notifications about detachment



Configurable detector ping interval





CMS software supporting visual alarms verification

HORUS

Horus

Manitou®

Manitou



SBN



Sentinel



WBB

CMS connectivity: Contact ID, SIA (DC-09)

Tech specs

Compatibility	Hub 2, Hub 2 Plus. Not compatible with ReX radio signal range extender
Recommended installation height	0.8 – 1.3 m
Sensing element	2 × PIR sensor
Motion detection distance	Adjustable, from 3 to 15 m
Pet immunity	Animals up to 80 cm tall
Sensitivity	Adjustable, 3 levels
Motion detector's viewing angle	Horizontal – 88,5° Vertical – 80°
Camera's angle	Horizontal – 105° Vertical – 102°
Photo in case of alarm	320 × 176 pixels (by default) 640 × 352 pixels Shooting series up to 5 photos
Jeweller radio technology	Communication range with a hub – up to 1.700 m Two-way communication Block encryption with a dynamic key Detector polling period – 12–300 s Frequency hopping
Wings radio technology	Transmission of a series of photos. Photo delivery time: up to 9 seconds
Infrared light for shooting in the dark	Available
Temperature sensor	Available
Operating temperature range Humidity	From –25°C to +60°C Up to 95%
Protection class	IP55
Anti-sabotage	Anti-masking Protection against forgery Jamming detection Tamper
Питание	4 x CR123A batteries Battery life: up to 3 years

Thank you

ajax.systems