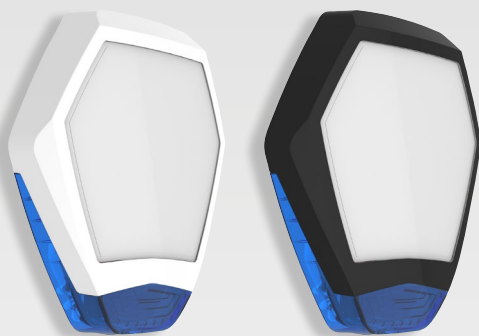


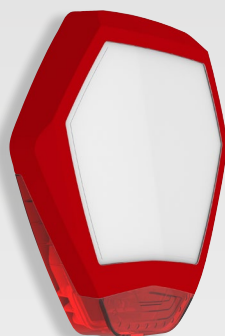
Odyssey X3 white/black frames:



Lens colour options:



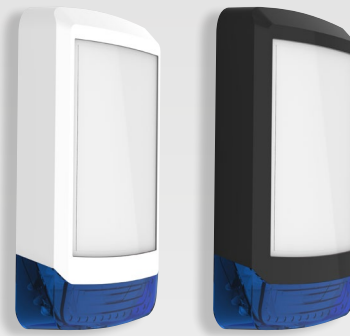
Odyssey X3 red frame:



Lens colour options:



Odyssey X1 white/black frames:



Lens colour options:



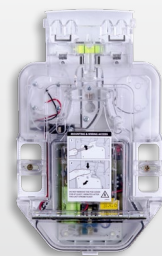
## Backlit



### Odyssey X-B

#### Grade 3 Sounder with Integral Backlight

- 115dB (A) twin piezo sounder
- Wall & cover tamper
- Patented engineer hold-off mode
- Battery monitoring with fault output
- Alternating white LED indication
- EN50131-4 Grade 3 Class IV

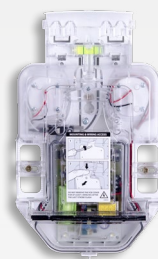


### Odyssey X-BE

#### Grade 2 Sounder with Integral Backlight

- 109dB (A) piezo sounder
- Wall & cover tamper
- Patented engineer hold-off mode
- Alternating white LED indication
- EN50131-4 Grade 2 Class IV

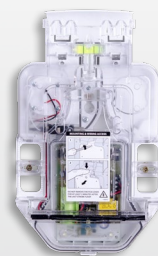
## Conventional



### Odyssey X

#### Grade 3 Sounder

- 115dB (A) twin piezo sounder
- Wall & cover tamper
- Patented engineer hold-off mode
- Battery monitoring with fault output
- Alternating white LED indication
- EN50131-4 Grade 3 Class IV



### Odyssey X-E

#### Grade 2 Sounder

- 109dB (A) piezo sounder
- Wall & cover tamper
- Patented engineer hold-off mode
- Alternating white LED indication
- EN50131-4 Grade 2 Class IV

## Dummy



### Odyssey X-BD

#### Backlit Dummy Deterrent

- Imitation sounder - Mimics Odyssey X wired and wireless sounders
- Low cost deterrent
- 12 V wired input for backlight & comfort LEDs
- 2 x AA Batteries for comfort LEDs only
- 3-5 Year battery life
- Accepts X1 and X3 covers

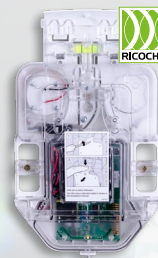


### Odyssey X-D

#### Dummy Sounder

- No electronics included
- Imitation sounder
- Low cost deterrent
- Accepts X1 and X3 covers

## Wireless



### Odyssey X-W

#### Wireless Sounder

- 105dB (A) piezo sounder
- Wall & cover tamper
- Selectable comfort LEDs
- Ricochet® mesh technology
- 8 x AA lithium batteries included
- EN50131-4, EN50131-5-3 Grade 2 Class IV



## ODYSSEY X SERIES PART NUMBERS

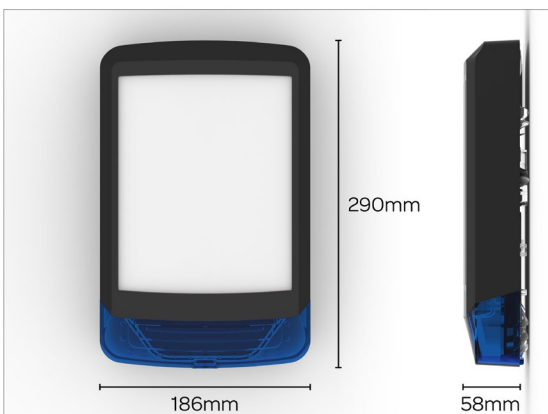
### ODYSSEY X COVERS

WDA-0001	Odyssey X1 Cover (White/Blue)
WDA-0002	Odyssey X1 Cover (White/Red)
WDA-0003	Odyssey X1 Cover (White/White)
WDA-0007	Odyssey X1 Cover (White/Green)
WDA-0004	Odyssey X1 Cover (Black/Blue)
WDA-0005	Odyssey X1 Cover (Black/Red)
WDA-0006	Odyssey X1 Cover (Black/White)
WDA-0008	Odyssey X1 Cover (Black/Green)
WDB-0001	Odyssey X3 Cover (White/Blue)
WDB-0002	Odyssey X3 Cover (White/Red)
WDB-0003	Odyssey X3 Cover (White/White)
WDB-0008	Odyssey X3 Cover (White/Green)
WDB-0004	Odyssey X3 Cover (Black/Blue)
WDB-0005	Odyssey X3 Cover (Black/Red)
WDB-0006	Odyssey X3 Cover (Black/White)
WDB-0007	Odyssey X3 Cover (Black/Green)
WDB-0012	Odyssey X3 Cover (Red/Red)
WDB-0013	Odyssey X3 Cover (Red/White)

### ODYSSEY X BACKPLATE OPTIONS

WDC-0001	Odyssey X-BE
WDC-0002	Odyssey X-B
WDD-0001	Odyssey X-E
WDD-0002	Odyssey X
WDE-0001	Odyssey X-D
WDL-0001	Odyssey X-BD
GBV-0001	Odyssey X-W

## ODYSSEY X1 DIMENSIONS



## TECHNICAL SPECIFICATIONS

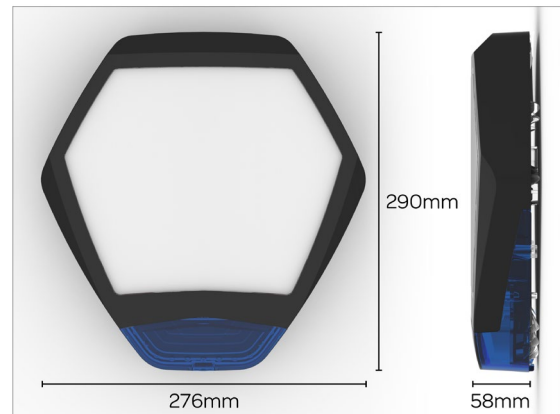
### WIRED UNITS

Supply Voltage:	12-16 VDC (13.7 nominal)		
<b>Current Drain (typical at 13.7VDC):</b>			
Quiescent:	18mA + 40mA (Backlit version)		
Strobe:	100mA		
Sounder	SAB	LC	SCB
X-E:	285mA	160mA	30mA
X-BE:	325mA	200mA	70mA
X:	405mA	190mA	30mA
X-B:	445mA	230mA	70mA
<b>Standby Battery :</b>			
Type:	NiMh Stack		
Voltage:	7.2VDC (nominal)		
Capacity:	250mAh		
Flash Tube:	1Ws Xenon		
<b>Comfort LEDs:</b>			
Brightness:	100mcd (typical)		
Flash Rate (tamper secure):	1Hz alternating (typical)		

### ENVIRONMENTAL

<b>Volume (SAB mode at 13.7 VDC):</b>	
X-W:	105dB(A)
X-E & X-EB:	109dB(A)
X & X-B:	115dB(A)
Acoustic Output:	Varying Sound Output
Cut-Off Time:	15 minutes
Waterproof Coating:	Conformal
Operating Temperature:	-25°C to +55°C (X-BD: -20°C to +55°C)
Storage Temperature:	-25°C to +60°C (X-BD: -20°C to +60°C)

## ODYSSEY X3 DIMENSIONS



## Custom Graphic Inserts

Available via the Texecom website, these photo quality custom designed graphic inserts replace traditional screen printing, enhancing quality and removing the need for installers and distributors alike to stock expensive custom screen printed covers.

