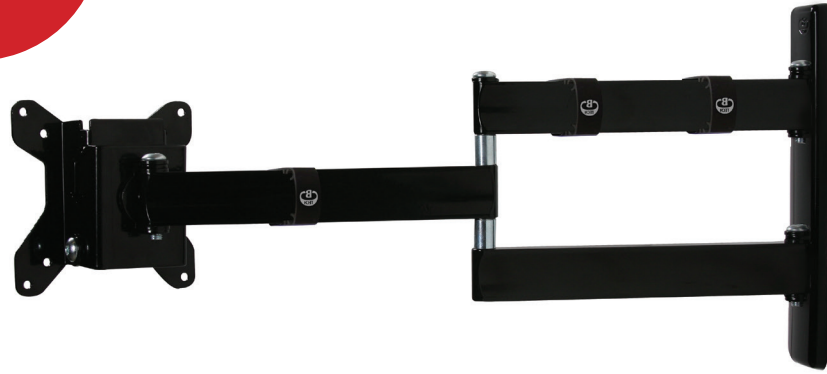


BT75 13

DOUBLE ARM FLAT SCREEN WALL MOUNT WITH TILT & SWIVEL



Designed to mount small flat screens, the BT7513 features a double articulated arm with easy tilt adjustment and a full 360° screen rotation for easy portrait or landscape mounting. The wall plate features 'OWLS' on wall levelling system to ensure a straight and smart installation. The BT7513 is also compatible with B-Tech's range of poles and collars, increasing the number of different ways it can be mounted, ideal for commercial applications as well as home installations. Security screws are provided to help prevent unauthorized removal of the screen.

SPECIFICATION

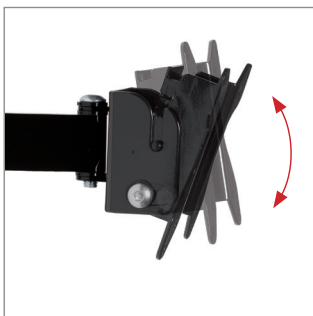
| | |
|-------------------------|---------------------|
| Recommended screen size | up to 28" |
| Max load | 15kg |
| VESA® compatibility | 75 x 75 & 100 x 100 |
| Tilt | +17 / -10° |
| Swivel at wall | 180° |
| Screen rotation | 360° |
| Distance from wall | 95mm to 467mm |

FEATURES

- Features three swivel points: 180° at wall, 360° at central pivot and 240° at interface
- Screen rotation allows screen to be mounted in landscape or portrait orientation
- Features 'OWLS' On Wall Levelling System
- CLIPLOGIC™ cable management included
- Compatible with B-Tech System 2 professional range
- Mounts to B-Tech BT7850 poles using 2x BT7841 or BT7052 Collars
- Security locking screws and Allen key provided help prevent unauthorised removal of the screen
- Simple 'hook-on' installation
- Coverplates included for a neat and tidy installation
- All mounting hardware included



fullmotionmounts



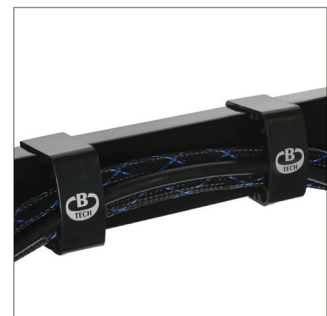
Easy tilt adjustment of +17° / -10°



Security locking screws provided



Space saving design - folds flat to the wall



CLIPLOGIC™ cable management

