

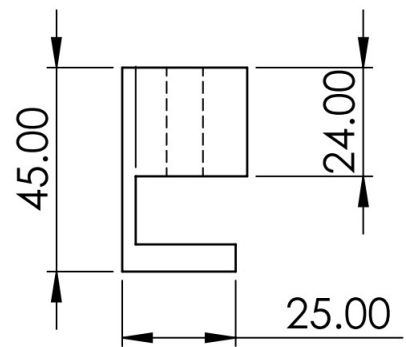
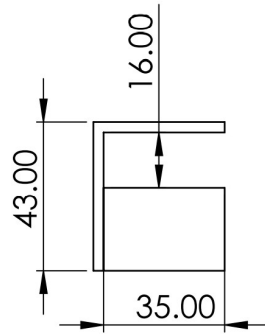


SOLENOID BOLT GLASS DOOR

MAGNETIC LOCK



DBGLS150



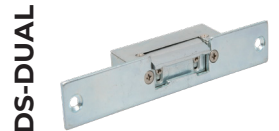
SPECIFICATION

- DBGLS150
- Operating voltage: 12VDC
 - Standby current: 120mA
 - Operating current: 900mA
 - Suitable for double action swinging doors
 - Holding force 1000kg
 - For use on frameless glass doors up to 15mm thickness

FEATURES

- DBGLS150
- Robust aluminium
 - Fail-safe operation
 - Long life drop bolt
 - Auto locking after 3, 6 or 9 seconds
 - Greater than 500,000 operation
 - Auto relocking timer setting

OTHER PRODUCTS

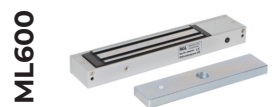


DIMENSIONS

- DBGLS150
- Dropbolt: 148x42x39 (mm)
 - Strike Plate: 148x42x25 (mm)

CONTENTS

- DBGLS150
- 2 Glass door units
 - Door shims



Manufactured by a BSIA Member