

External detection with day and night visual verification



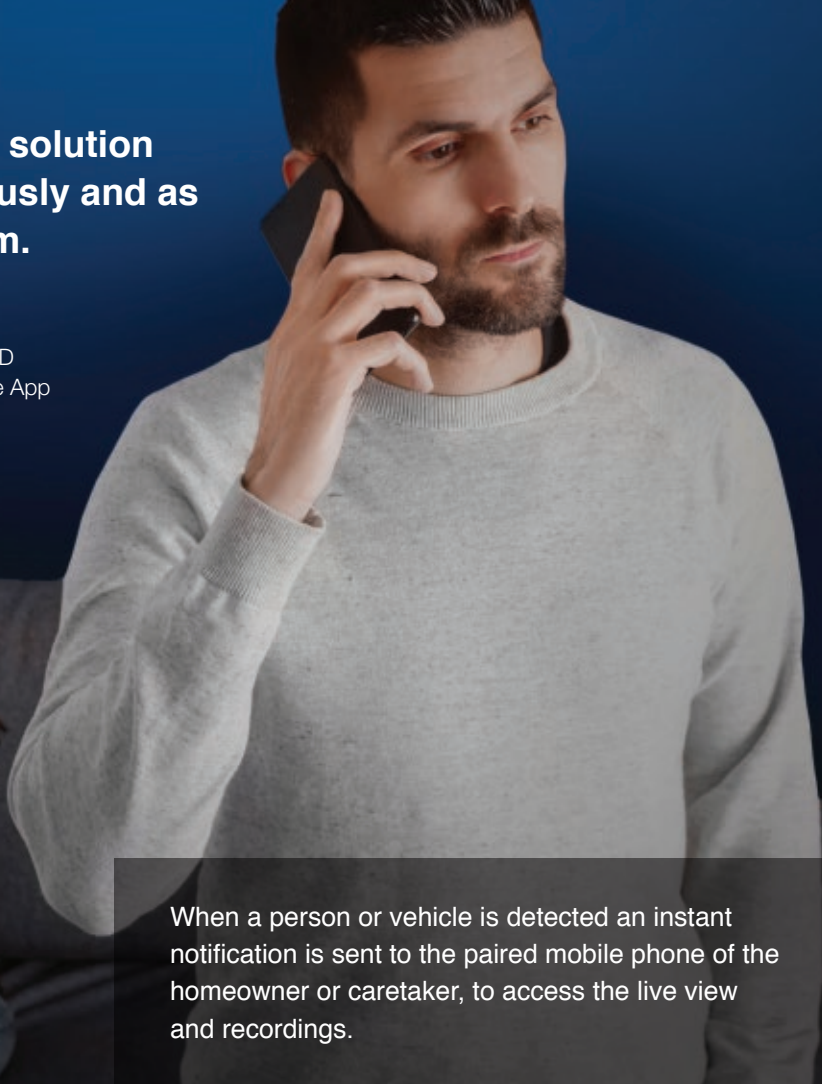
The combination of VX Infinity intrusion sensors with the 180° HD camera module, VXI-CMOD, provides a very reliable outdoor security solution with real-time visual verification.

A complete visual verification solution which can be used autonomously and as part of a wider security system.



OPTEX Vision

Dedicated smartphone app for the VXI-CMOD featuring warping functionality available in the App Store and Google Play



When a person or vehicle is detected an instant notification is sent to the paired mobile phone of the homeowner or caretaker, to access the live view and recordings.

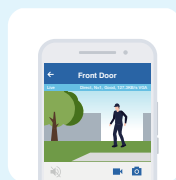
Detect ▶

Alarm signal
video recording



Verify ▶

Access VXI-CMOD
real-time visual
verification

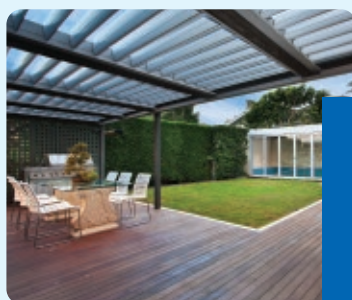


Call ▶

Report criminal activity



Flexible security system



I don't have an alarm system but would like to be notified on my phone if someone enters my garden.

The VXI+VXI-CMOD solution doesn't require an alarm control panel, only a WIFI router and internet connection. You can manage it via the App and share the recorded videos.

Verify without taking any risk



I want to quickly verify what has triggered the alarm to take the appropriate action.

Through the App you will be immediately notified of an alarm. You can watch the recorded video and access the live view and audio. All from the safety of your phone.

Keeping an eye on your house

I'd like to check that my delivery has arrived or my family members came back safely home.



Wherever you are, you can conveniently keep an eye on your premises by getting instant notifications on your smart phone or tablet.

Live video stream access

I have an existing security system, can I connect the VXI-CMOD to it?

With the Real Time Streaming Protocol, the VXI-CMOD can stream the live view to your existing security system, being an alarm panel or NVR.

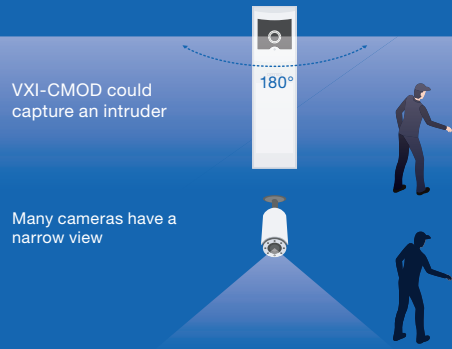


Intelligent outdoor sensor discriminating main causes of false alarms



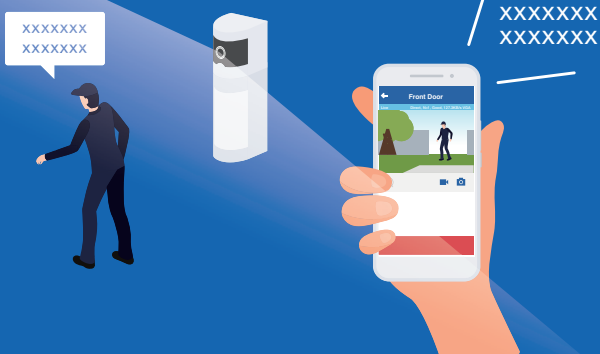
Not affected by variable lighting, weather changes, shadows and small animals, the VXi is a very reliable sensor trusted by hundreds of thousands of customers.

180° view angle and night vision featuring strong and wide IR light



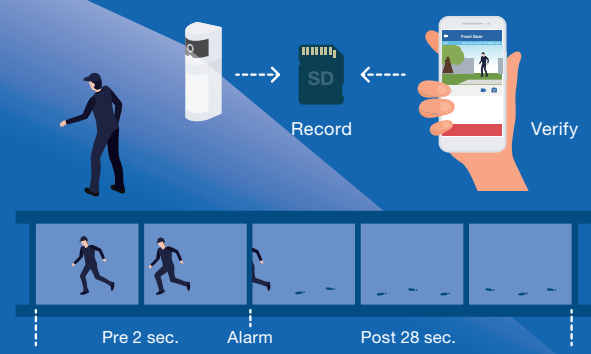
Microphone is integrated

(Only available with OPTEX Vision App)

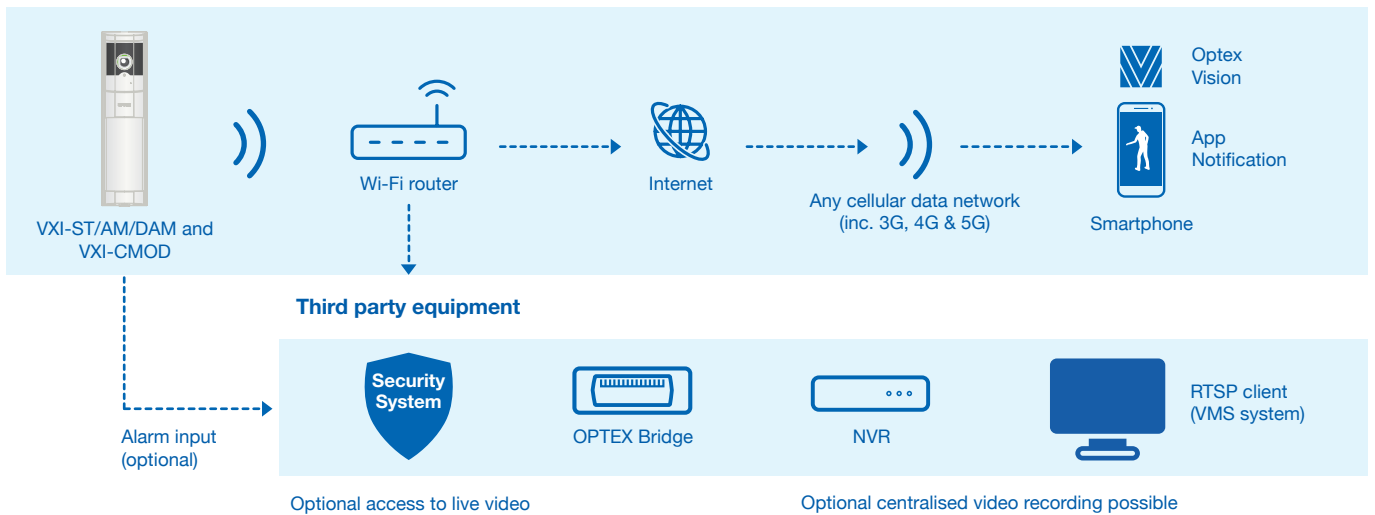


Sensor triggers recording function with 2 sec. pre-recording

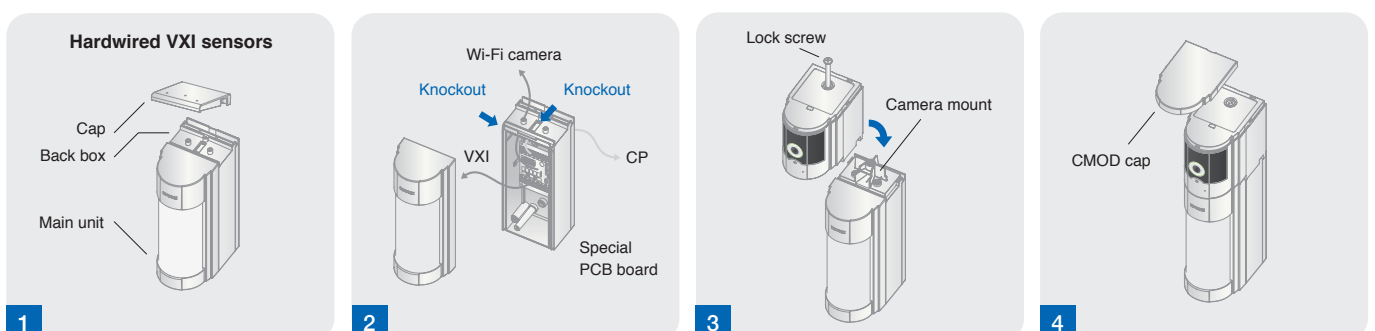
(Only available with OPTEX Vision App)



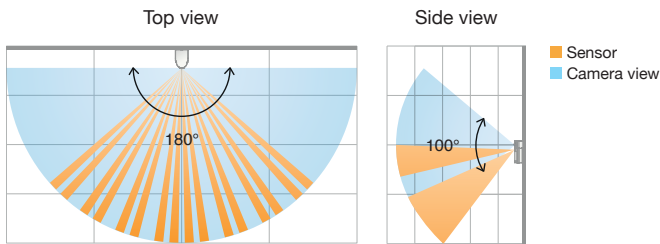
System Diagram



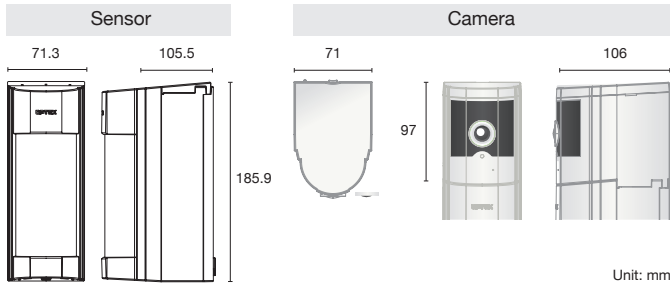
Easy Assembly



Sensor detection area and camera view



Dimensions



VXI-ST, VXI-AM and VXI-DAM Specifications

Model	VXI-ST	VXI-AM	VXI-DAM
Detection method	Passive infrared		Passive infrared & Microwave
PIR coverage	12.0 m (40 ft) 90° wide / 16 zones		
PIR distance limit	12 - 2.5 m (5 levels)		
Detectable speed	0.3 - 1.5 m/s (1 - 5 ft/s)		
Sensitivity	2.0°C (3.6°F) at 0.6 m/s (2 ft/s)		
Power input	9.5 - 18 V DC		
Current draw	20 mA (max) at 12 V DC	24 mA (max) at 12 V DC	35 mA (max) at 12 V DC
Alarm period	2.0 ±1 sec.		
Warm-up period	Approx. 60 sec. (LED blinks)		
Alarm output	N.C. / N.O. Selectable 28 V DC 0.1 A (max)		
Trouble output	-	N.C. 28 V DC 0.1 A (max)	
Tamper output	N.C. 28 V DC 0.1 A (max) open when cover removed.		
LED indicator	Red: Warm-up, alarm, masking detection (VXI-AM only)		Red: Warm-up, alarm, masking detection. Yellow: Warm-up, MW detect.
RF interference	No alarm 10 V/m		
Operating temperature	-30 - +60°C (-22 - +140°F)		-20 - +45°C (-4 - +113°F)
Environment humidity	95% max.		
International protection	IP55		
Mounting	Wall, Pole (Outdoor, Indoor)		
Mounting height	0.8 - 1.2 m (2.64 ft - 3'94 ft)		
Weight	500 g (17.7 oz.)		600 g (21.2 oz.)
Accessories	Screw (4x20 mm) x2, Wiring sponge x3, Masking seal x3		



Visit our multi-lingual manual for full installation details

navi.optex.net/manual/50262



OPTEX EMEA HEADQUARTERS

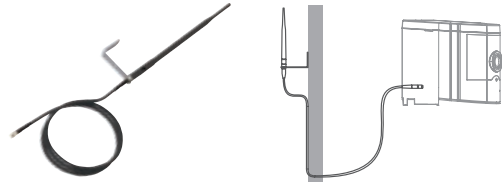
OPTEX (EUROPE) LIMITED
Unit 13, Cordwallis Park,
Clivemont Road, Maidenhead,
Berkshire, SL6 7BU, United Kingdom
Tel: +44 (0) 1628 631 000
Email: marketing@optex-europe.com
www.optex-europe.com

Watch the video



Options

External antenna and 1m cable (CMOD-ANT)



VXI-CMOD camera module specifications

Model	VXI-CMOD
Wireless connectivity	IEEE 802.11 b/g/n
Data encryption	AES 128-bit data encryption via proprietary P2P connection protocol
Security	WEP/ WPA/ WPA2 (TKIP, 128-bit AES)
Simultaneous viewers	OPTEX Vision App: Max.3 concurrent viewers *Performance may be impacted when connecting to multiple mobile devices simultaneously.
Image sensor	2MP (Full HD)
Image resolution	1,080 P/ 720 P/ VGA (Selectable by APP)
Viewing angle	H: 180° V: 100°
Minimum illumination	0 lux (with IR illumination)
Night vision	IR LED low and high with IR-Cut switcher
Image compression	H.264 High profile
Image resolution	Full HD
Frame rate	OPTEX Vision App: 15 FPS, RTSP: 10 FPS
IP address	DHCP or Fixed IP
RTSP Authentication	Digest authentication or disable
Recording period	OPTEX Vision App: 30 sec. (inc. 2 s pre-alarm recording) RTSP: depending on the third party's device.
Memory Storage	microSD card (32 GB max.) Not included/ Only FAT 32 format compatible/ Format with OPTEX Vision App.
Power supply	9.5 to 24 V DC
Power consumption	IR low mode: 400 mA max. / IR high mode: 1.0 A max.
Wake up time	2 min.
LED indicator	1 LED (red and blue)
Microphone	Built-in (audio only available with OPTEX Vision App)
Mode selector	High/low
Internal/ External	Internal/ External selectable
antenna selector	External antenna (CMOD-ANT) is separate option
Location	Outdoor/Indoor
Operating temperature	-10°C to +50°C
Operating humidity	90% max. (Non condensed) TBE
IP rate	IP 55
Weight	280 g

- Web service is subject to be terminated without prior notice.
- Specifications and designs are subject to change without prior notice.
- RTSP streaming doesn't include sound data.

OPTEX LOCAL OFFICES IN EMEA

Optex Security Sp. z o.o.
(Eastern Europe / CIS countries)
Tel: +48 (22) 598 06 60
Email: optex@optex.com.pl

Optex Security SAS
(France, North Africa)
Tel: +33 (0) 4 37 55 50 50
Email: contact@optex-security.com

OPTEX/Fiber Sensys, Dubai Branch
(Middle East)
Tel: +971 (0) 4501 53 94
Email: contact@optex-fsi.com

OPTEX TECHNOLOGIES B.V.
(Benelux)
Tel: +31 70 4194100
Email: info@optex.eu