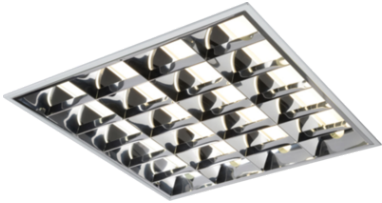


DATASHEET



MRB418EMHF

230V IP20 4x18W T8 HF CAT2 Emergency Modular Fluorescent Fitting 600x600mm

www.mlaccessories.co.uk

MLA PART CODE	MRB418EMHF
DESCRIPTION	230V IP20 4x18W T8 HF CAT2 Emergency Modular Fluorescent Fitting 600x600mm
NET WEIGHT (KG)	3.35
FINISH	White
DIMENSIONS (MM)	Length - 595 Width - 595 Recessed Depth - 80 Minimum Void - 130
CONSTRUCTION	Construction - Steel
CLASS	I
IP RATING	IP20
MAX. WATTAGE (W)	4x18
LAMP TECHNOLOGY	Fluorescent
LAMP BASE	T8
LAMP INCLUDED	No
LED COMPATIBLE	No
DIMMABLE	No
EMERGENCY	Maintained / Non-maintained / Switched
INPUT VOLTAGE	230V 50Hz
DRIVER	EFFICIENCY FULL LOAD - 91
BATTERY INCLUDED	Yes
WARRANTY	1year(s)
WARRANTY INFORMATION	(excluding battery)
MANUFACTURED IN ACCORDANCE WITH	BS EN 60598
ORIGIN OF MANUFACTURE	China
DECLARATION OF CONFORMITY (HELD ON FILE)	Yes
EAN	5055559130550

Date Created: 03/04/2023 14:17