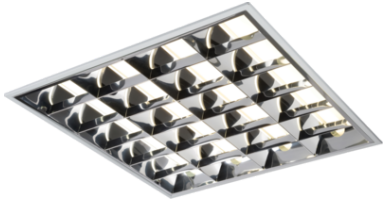


DATASHEET



MRB418HF

230V IP20 4x18W T8 HF CAT 2 Modular Fluorescent Fitting 600x600mm

www.mlaccessories.co.uk

MLA PART CODE	MRB418HF
DESCRIPTION	230V IP20 4x18W T8 HF CAT 2 Modular Fluorescent Fitting 600x600mm
NET WEIGHT (KG)	2.85
FINISH	White
DIMENSIONS (MM)	Length - 595 Width - 595 Recessed Depth - 80 Minimum Void - 130
CONSTRUCTION	Construction - Steel
CLASS	I
IP RATING	IP20
MAX. WATTAGE (W)	4x18
LAMP TECHNOLOGY	Fluorescent
LAMP BASE	T8
LAMP INCLUDED	No
LED COMPATIBLE	No
DIMMABLE	No
INPUT VOLTAGE	230V 50Hz
DRIVER	EFFICIENCY FULL LOAD - 91
WARRANTY	1year(s)
MANUFACTURED IN ACCORDANCE WITH	BS EN 60598
ORIGIN OF MANUFACTURE	China
DECLARATION OF CONFORMITY (HELD ON FILE)	Yes
EAN	5055559132783

Date Created: 03/04/2023 14:17

