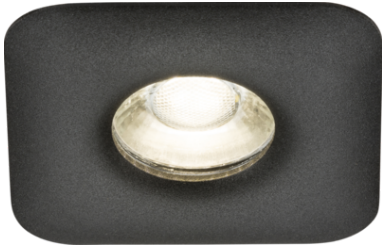


DATASHEET



ODA1FSB

Odina Single Fixed Square Downlight Black

www.mlaccessories.co.uk

MLA PART CODE	ODA1FSB
DESCRIPTION	Odina Single Fixed Square Downlight Black
NET WEIGHT (KG)	0.0895
FINISH	Black
DIMENSIONS (MM)	Length - 82 Width - 82 Projection - 6 Minimum Void - 70
CUT-OUT (MM)	Cut-out Diameter - 72
CONSTRUCTION	Construction - Die-cast aluminium
CLASS	I
IP RATING	IP20
MAX. WATTAGE (W)	10
LAMP BASE	GU10
LAMP INCLUDED	No
LED COMPATIBLE	Yes
DIMMABLE	Lamp dependent
IC RATED	No
INPUT VOLTAGE	230V 50Hz
WARRANTY	5year(s)
MANUFACTURED IN ACCORDANCE WITH	BS EN 60598
ORIGIN OF MANUFACTURE	China
DECLARATION OF CONFORMITY (HELD ON FILE)	Yes
EAN	5056270872804

Date Created: 03/04/2023 13:50

