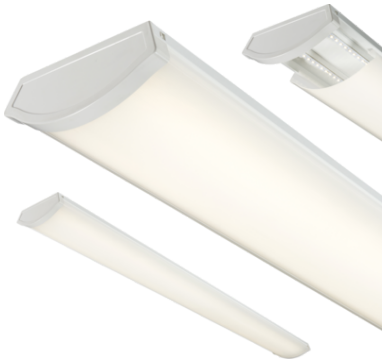


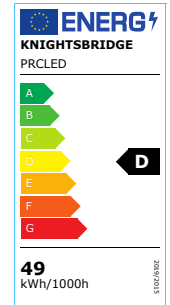
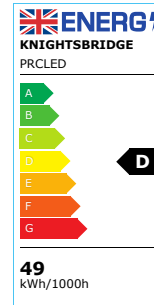
DATASHEET



PRCL LED

230V IP20 5ft 49W LED Surface mount

www.mlaccessories.co.uk



| MLA PART CODE | PRCL LED |
|-------------------------------|--|
| DESCRIPTION | 230V IP20 5ft 49W LED Surface mount |
| NET WEIGHT (KG) | 2.83 |
| FINISH | White |
| DIFFUSER | Opal |
| DIMENSIONS (MM) | Length - 1490 Width - 198 Projection - 68 |
| CONSTRUCTION | Construction - Pressed steel Construction 2 - & polycarbonate |
| CLASS | I |
| IP RATING | IP20 |
| WATTAGE (W) | 49 |
| LAMP TECHNOLOGY | LED |
| LAMP INCLUDED | Yes |
| LUMENS (LM) | 6110 |
| LUMENS LIGHT SOURCE ONLY (LM) | 7750 |
| LUMEN TOLERANCE | 5% |
| EFFICACY (LM/W) | 153.455 |
| CIRCUIT WATTAGE (W) | 50.5 |
| CCT | 4000K |
| LIGHT COLOUR | Cool White |
| CRI | >80 |
| SDCM | <6 |
| RUNNING CURRENT (A) | 0.228 |
| DISPLACEMENT FACTOR | >0.9 |
| SVM | 0.81 |
| PST-LM | 0.037 |
| BEAM ANGLE (DEGREES) | 120 |
| LIFE SPAN (HRS) | 30,000 |

| | |
|--|---|
| L70B50 LIFESPAN (HRS) | 50,000 |
| DIMMABLE | No |
| OPERATING TEMPERATURE | -15~45°C |
| INPUT VOLTAGE | 230V 50Hz |
| DRIVER | DRIVER TYPE - Constant Current MAX. OUTPUT - 50W OUTPUT VOLTAGE - 29-43V OUTPUT CURRENT - 1200mA POWER FACTOR - 0.95 EFFICIENCY FULL LOAD - 88.76 ISOLATION - SELV AMBIENT TEMPERATURE (Ta) - -15~45°C CASE TEMPERATURE (Tc) - 70°C |
| WARRANTY | 5year(s) |
| MANUFACTURED IN ACCORDANCE WITH | BS EN 60598 |
| ORIGIN OF MANUFACTURE | China |
| DECLARATION OF CONFORMITY (HELD ON FILE) | Yes |
| EAN | 5055832971016 |

Date Created: 03/04/2023 13:07

