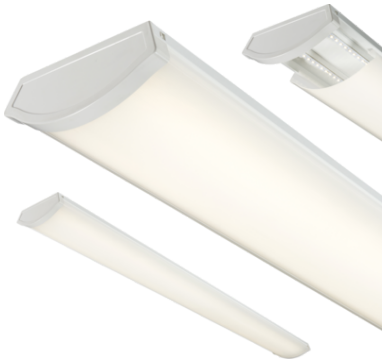


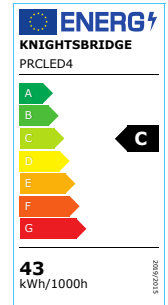
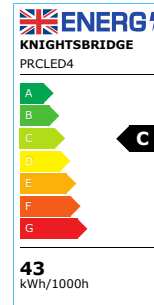
DATASHEET



PRCLED4

230V IP20 4ft 43W LED Surface mount

www.mlaccessories.co.uk



MLA PART CODE	PRCLED4
DESCRIPTION	230V IP20 4ft 43W LED Surface mount
NET WEIGHT (KG)	2.5
FINISH	White
DIFFUSER	Opal
DIMENSIONS (MM)	Length - 1229 Width - 198 Projection - 68
CONSTRUCTION	Construction - Pressed steel Construction 2 - & polycarbonate
CLASS	I
IP RATING	IP20
WATTAGE (W)	43
LAMP TECHNOLOGY	LED
LAMP INCLUDED	Yes
LUMENS (LM)	4700
LUMENS LIGHT SOURCE ONLY (LM)	5920
LUMEN TOLERANCE	5%
EFFICACY (LM/W)	155.340
CIRCUIT WATTAGE (W)	38.14
CCT	4000K
LIGHT COLOUR	Cool White
CRI	>80
SDCM	<6
RUNNING CURRENT (A)	0.199
DISPLACEMENT FACTOR	>0.9
SVM	0.733
PST-LM	0.034
BEAM ANGLE (DEGREES)	120
LIFE SPAN (HRS)	35,000

L70B50 LIFESPAN (HRS)	50,000
DIMMABLE	No
OPERATING TEMPERATURE	-15~45°C
INPUT VOLTAGE	230V 50Hz
DRIVER	DRIVER TYPE - Constant Current MAX. OUTPUT - 40W OUTPUT VOLTAGE - 29-43V OUTPUT CURRENT - 960mA POWER FACTOR - 0.95 EFFICIENCY FULL LOAD - 89.04 ISOLATION - SELV AMBIENT TEMPERATURE (Ta) - -15~45°C CASE TEMPERATURE (Tc) - 70°C
WARRANTY	5year(s)
MANUFACTURED IN ACCORDANCE WITH	BS EN 60598
ORIGIN OF MANUFACTURE	China
DECLARATION OF CONFORMITY (HELD ON FILE)	Yes
EAN	5055832986492

Date Created: 03/04/2023 13:15

