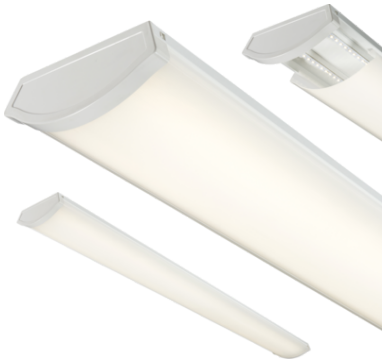


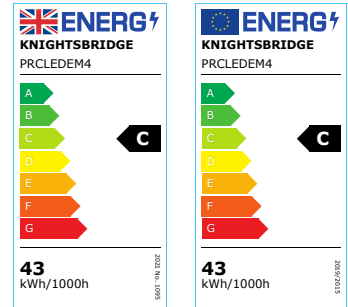
DATASHEET



PRCLEDEM4

230V IP20 4ft 43W LED Surface mount - Emergency

www.mlaccessories.co.uk



MLA PART CODE	PRCLEDEM4
DESCRIPTION	230V IP20 4ft 43W LED Surface mount - Emergency
NET WEIGHT (KG)	3.2
FINISH	White
DIFFUSER	Opal
DIMENSIONS (MM)	Length - 1229 Width - 198 Projection - 68
CONSTRUCTION	Construction - Pressed steel Construction 2 - & polycarbonate
CLASS	I
IP RATING	IP20
WATTAGE (W)	43
LAMP TECHNOLOGY	LED
LAMP INCLUDED	Yes
LUMENS (LM)	4700
LUMENS LIGHT SOURCE ONLY (LM)	5920
LUMEN TOLERANCE	5%
EFFICACY (LM/W)	155.340
LUMENS EMERGENCY MODE (LM)	730
CIRCUIT WATTAGE (W)	38.14
CCT	4000K
LIGHT COLOUR	Cool White
CRI	>80
SDCM	<6
RUNNING CURRENT (A)	0.199
DISPLACEMENT FACTOR	>0.9
SVM	0.733
PST-LM	0.034
BEAM ANGLE (DEGREES)	120

LIFE SPAN (HRS)	35,000
L70B50 LIFESPAN (HRS)	50,000
DIMMABLE	No
EMERGENCY	Maintained / Non-maintained / Switched
OPERATING TEMPERATURE	-15~45°C
INPUT VOLTAGE	230V 50Hz
DRIVER	DRIVER TYPE - Constant Current MAX. OUTPUT - 40W OUTPUT VOLTAGE - 29-43V OUTPUT CURRENT - 960mA POWER FACTOR - 0.95 EFFICIENCY FULL LOAD - 89.04 ISOLATION - SELV AMBIENT TEMPERATURE (Ta) - -15~45°C CASE TEMPERATURE (Tc) - 70°C
BATTERY INCLUDED	Yes
WARRANTY	5year(s)
WARRANTY INFORMATION	(excluding battery)
MANUFACTURED IN ACCORDANCE WITH	BS EN 60598
ORIGIN OF MANUFACTURE	China
DECLARATION OF CONFORMITY (HELD ON FILE)	Yes
EAN	5055832986515

Date Created: 03/04/2023 13:15

