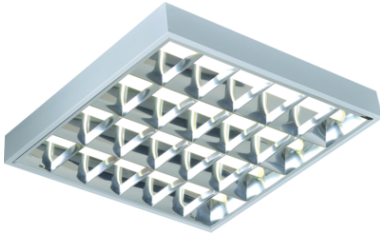


## DATASHEET



### SURF418EMHF

**IP20 4x18W T8 CAT2 Surface Mounted Emergency Fluorescent Fitting**

[www.mlaccessories.co.uk](http://www.mlaccessories.co.uk)

<b>MLA PART CODE</b>	<b>SURF418EMHF</b>
<b>DESCRIPTION</b>	IP20 4x18W T8 CAT2 Surface Mounted Emergency Fluorescent Fitting
<b>NET WEIGHT (KG)</b>	3.734
<b>FINISH</b>	White
<b>DIMENSIONS (MM)</b>	Length - 610 Width - 600 Projection - 80
<b>CONSTRUCTION</b>	Construction - Steel
<b>CLASS</b>	I
<b>IP RATING</b>	IP20
<b>MAX. WATTAGE (W)</b>	4x18
<b>LAMP TECHNOLOGY</b>	Fluorescent
<b>LAMP BASE</b>	T8
<b>LAMP INCLUDED</b>	No
<b>LED COMPATIBLE</b>	No
<b>DIMMABLE</b>	No
<b>EMERGENCY</b>	Maintained / Non-maintained / Switched
<b>INPUT VOLTAGE</b>	230V 50Hz
<b>DRIVER</b>	EFFICIENCY FULL LOAD - 90
<b>BATTERY INCLUDED</b>	Yes
<b>WARRANTY</b>	1year(s)
<b>WARRANTY INFORMATION</b>	(excluding battery)
<b>MANUFACTURED IN ACCORDANCE WITH</b>	BS EN 60598
<b>ORIGIN OF MANUFACTURE</b>	China
<b>DECLARATION OF CONFORMITY (HELD ON FILE)</b>	Yes
<b>EAN</b>	5055559114987

Date Created: 03/04/2023 12:38