

INSTALLATION & MAINTENANCE MANUAL
EX004H



230V
50Hz



IP
X4

ML
ACCESSORIES LTD



CE



106

GENERAL INSTRUCTIONS

These instructions should be read carefully and retained after installation by the end user for future reference and maintenance.

These instructions should be used to aid installation of the following product:

EX004H

SAFETY

- This product must be installed in accordance with the latest edition of the IEE Wiring Regulations (BS7671) and current Building Regulations. If in any doubt, consult a qualified electrician
- Please isolate mains prior to installation or maintenance
- Check the total load on the circuit (including when this product is fitted) does not exceed the rating of the circuit cable, fuse or circuit breaker
- Please note the IP (Ingress Protection) rating of this product when deciding the location for installation
- This product is Class II double insulated
- This product is IPX4 rated

INSTALLATION

- Provide power to the required point of installation
- Cut a suitable 100mm diameter hole in the mounting surface ensuring not to infringe with any joists, gas / water pipes or electrical cables. Install suitable ducting and a suitable external grille or shutter. The maximum length of ducting to be used is 2m
- Remove the front fascia (see Fig. 1)

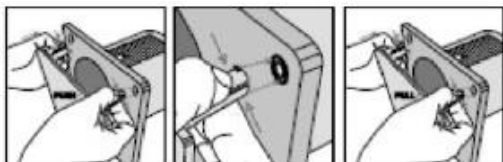


Fig. 1

- Remove the faceplate by removing the screw at the bottom of the product and lifting off
- Mark the location of the fixing holes and drill ensuring not to infringe with any gas / water pipes or electrical cables
- Remove the cable knock-out on the baseplate and guide the mains cable through
- Fix the base to the mounting surface using the fixings provided
- Remove the terminal cover by removing the two screws (see Fig. 2)

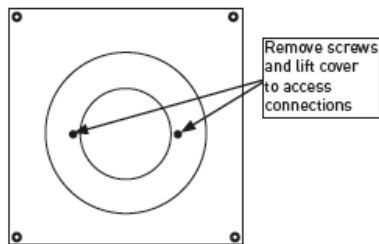


Fig. 2

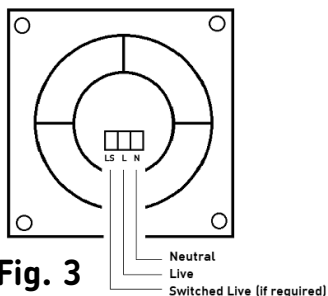
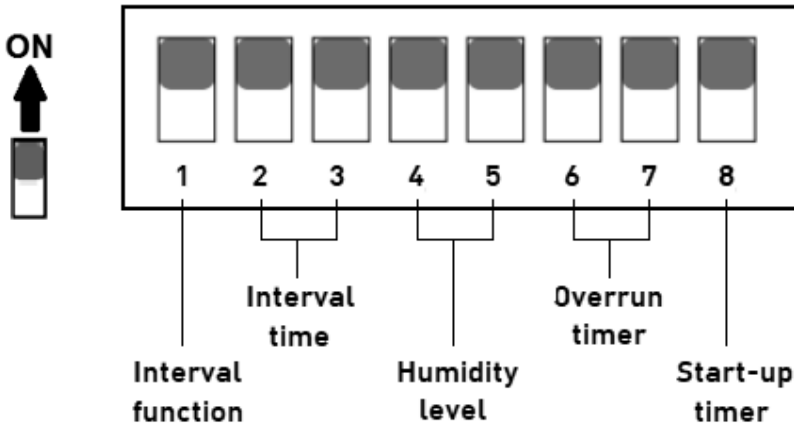


Fig. 3

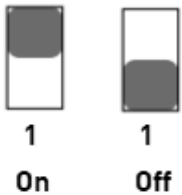
- Carefully bring the wires into the terminal enclosure, and ensuring correct polarity is observed, wire as shown in Fig. 3. The switched live supply is not needed if only using the humidistat or interval functions

- Adjust the DIP switch to the required settings - see DIP Switch Settings below
- Reassemble the terminal cover, faceplate and front fascia
- Switch on and check for correct operation

DIP SWITCH SETTINGS



Interval function

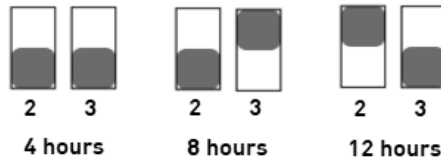


With the interval function on, the fan operates irrespective of humidity. This is useful to prevent the fan running constantly where humidity levels are consistently high, for example near the sea. It also allows the fan to operate when humidity levels are consistently low, for example when installed near a heating appliance.

The fan switches on automatically for one hour, irrespective of the humidity level, switches off for the interval set, then switches on again for one hour, etc.

Interval time

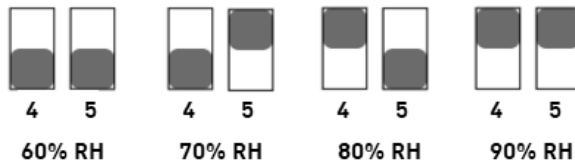
The interval time can be set as follows:



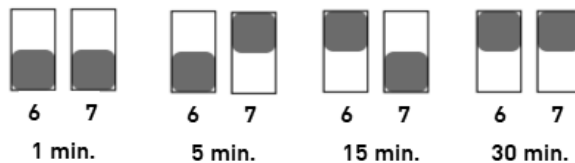
Humidity function

The humidistat causes the fan to operate when the humidity level reaches the set level (+10/-5%). It switches off when the humidity drops below the set level and after the selected period on the overrun timer.

The humidity level can be set as follows



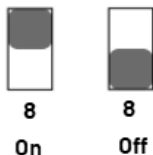
The overrun time can be set as follows



Operation with external switch

Wire as per Fig. 3 with a switched live supply. The fan operates via the humidistat function described above, but additionally switches on and remains on while the switched live supply is on. After the switched live turns off, the fan continues to operate for the selected period on the overrun timer. If the humidity is above the selected level, it will continue to operate via the humidistat function.

Start-up timer function



With the start-up timer function on, this causes a delay of 50 seconds before the fan switches on via the external switch. If the switched live is on for less than 50 seconds the fan will not switch on.

Factory settings

Interval function	Off
Interval time	4 hours
Humidistat	60% RH
Timer	1 min.
Start-up timer function	Off

WARNING

This product must be disconnected from the circuit if subjected to any high voltage or insulation resistance testing. Irreparable damage will occur if this instruction is not followed.

GENERAL

The LED lamps fitted in this product are non-replaceable. The product should be recycled in the correct manner when it reaches the end of its life. Check local authorities for where facilities exist.

Clean with a soft dry cloth only, do not use aggressive cleaning products or solvents which may damage the product.

This product is non-dimmable.

WARRANTY

This product has a warranty of 3 years from date of purchase. Failure to install this product in accordance with the current edition of the IEE Wiring Regulations (BS7671), improper use, or removal of the batch code will invalidate the warranty.

If this product should fail within its warranty period, it should be returned to the place of purchase for a free of charge replacement. ML Accessories does not accept responsibility for any installation costs associated with the replacement product. Your statutory rights are not affected.

ML Accessories reserve the right to alter product specification without prior notice.