



LET'S GET
YOU SET UP

USER GUIDE



Download the SmartKnight App

On Google Play (Android™) or App Store® (Apple®).
Open the app, tap "Register" and follow the on-screen instructions



Add Device

(2.4 Ghz only)

To add a device tap the "+" on top right corner, select the product category and follow the on-screen instructions

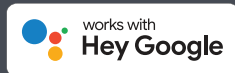


Enjoy

Enjoy your connected product. For more in-depth instructions, please see section titled "Wi-Fi Control" in this leaflet



Setting up Voice Assistants



Enable the "SmartKnight" skill in either voice assistant and follow the app instructions to control your device(s) with your voice.

Visit <http://www.mlaccessories.co.uk> for further assistance



INSTALLATION & MAINTENANCE MANUAL

CPLxxWCT

GENERAL INSTRUCTIONS

These instructions should be read carefully and retained after installation by the end user for future reference and maintenance.

These instructions should be used to aid installation of the following product:
CPLxxWCT

SAFETY

- This product must be installed in accordance with the latest edition of the IEE Wiring Regulations (BS7671) and current Building Regulations. If in any doubt, consult a qualified electrician
- Please isolate mains prior to installation or maintenance
- Check the total load on the circuit (including when this luminaire is fitted) does not exceed the rating of the circuit cable, fuse or circuit breaker
- Please note the IP (Ingress Protection) rating of this luminaire when deciding the location for installation
- This product is Class II double insulated
- This product series is IP20 rated

INSTALLATION GUIDE

If this luminaire is being used in conjunction with an external PIR or sensor, please confirm with the manufacturer of the sensors that they are compatible with LED luminaires

SURFACE MOUNTING INSTALLATION

Note - When surface mounting, the installer must ensure the bracket is secured and, if needed, other fixings should be used depending on the installation conditions.

- Provide power to the required point of installation
- Remove the bracket from the luminaire by pulling simultaneously at both ends - do not pull from the centre of the bracket
- Fix the bracket to the ceiling using the screws and plugs provided
- Connect the luminaire to the mains supply ensuring that correct polarity is observed: Live (brown) and Neutral (blue). An appropriate junction box should be used (not supplied). It may be necessary to make a cut-out in the ceiling in order to recess the junction box
- Push the luminaire directly onto the bracket (see Fig. 1)



Fig. 1

- Switch on and check for correct operation

RECESSED INSTALLATION

Note - If cutting a hole in the ceiling, please ensure not to infringe with any joists, gas/water pipes or electrical cable

Note - The clips on the luminaires are designed for recessed installation in ceilings with a thickness between 4mm - 15mm. The design of the clips will safely work on thicker materials, however, confirmation and testing should be carried out prior to installation.

- Provide power to the required point of installation
- Remove the bracket from the luminaire by pulling simultaneously at both ends - do not pull from the centre of the bracket
- This luminaire can be mounted beneath a cut-out of the following dimensions:

Product code	Cut-out dimensions (mm)
CPL18WCT	55 - 175
CPL24WCT	55 - 250

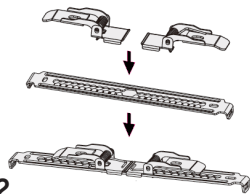


Fig. 2

- Insert the springs into the bracket and slide to the required position according to the size of the cut-out (see Fig. 2)

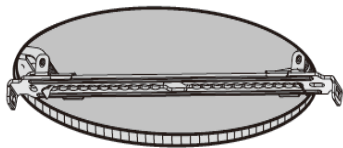
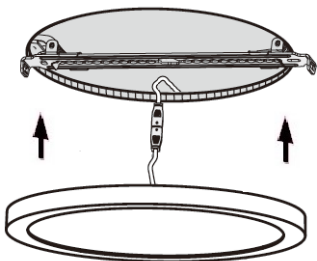


Fig. 3

- Lift both springs and fit into the ceiling (see Fig. 3)



- Connect the luminaire to the mains supply ensuring that correct polarity is observed: Live (brown) and Neutral (blue). An appropriate junction box should be used (not supplied)
- Push the luminaire directly onto the bracket (see Fig. 4)

Fig. 4

- Switch on and check for correct operation

- A range of magnetic bezels are available for this luminaire range, please note that these bezels are not vandal proof

WARNING

This product must be disconnected from the circuit if subjected to any high voltage or insulation resistance testing. Irreparable damage will occur if this instruction is not followed.

GENERAL

- The LED lamps fitted in this product are non-replaceable. The unit should be recycled in the correct manner when it reaches the end of its life. Check local authorities for where facilities exist
- This product is dimmable via app only.
- Clean with a soft dry cloth only, do not use aggressive cleaning products or solvents which may damage the product.

WI-FI CONTROL

- Download the **SmartKnight** app on Google Play or the App Store®
- Once the app is downloaded, open the app and tap “Register” then follow the on-screen instructions
- To add a luminaire to the app, switch on the power to the fitting and tap “+” on the top right corner
- Select “Lighting (Wi-Fi)”
- If the light is flashing rapidly, skip the reset procedure and tap “Confirm the light is flashing rapidly”. If the light is not flashing, follow the on-screen instructions to reset it
- Connect to the desired Wi-Fi network, tap “Confirm” and the app will start searching for devices. Please note only 2.4 GHz networks are supported and make sure your device is connected to the same Wi-Fi network
- After the light has been added successfully to the app, the luminaire can be named and added to a room. After naming the luminaire, tap “Done”

WARRANTY

This product has a warranty of 2 years from date of purchase. Failure to install this product in accordance with the current edition of the IEE Wiring Regulations (BS7671), improper use, or removal of the batch code will invalidate the warranty. If this product should fail within its warranty period, it should be returned to the place of purchase for a free of charge replacement. ML Accessories does not accept responsibility for any installation costs associated with the replacement product. Your statutory rights are not affected. ML Accessories reserve the right to alter product specification without prior notice.

Amazon, Alexa and all related logos are trademarks of Amazon.com, Inc. or its affiliates.

Google, Android and Google Play are trademarks of Google LLC.



ML Accessories Limited LU5 4LT
www.mlaccessories.co.uk