



INSTALLATION & MAINTENANCE MANUAL

WGULED / WGULEN / WHGULED / WSGULED

GENERAL INSTRUCTIONS

These instructions should be read carefully and retained after installation by the end user for future reference and maintenance.

These instructions should be used to aid installation of the following products:

WGULED / WGULEN / WHGULED / WSGULED

SAFETY

- This product must be installed in accordance with the latest edition of the IEE Wiring Regulations (BS7671) and current Building Regulations. If in any doubt, consult a qualified electrician
- Please isolate mains prior to installation or maintenance
- Check the total load on the circuit (including when this luminaire is fitted) does not exceed the rating of the circuit cable, fuse or circuit breaker
- Please note the IP (Ingress Protection) rating of this product when deciding the location for installation
- This product is safe for use as a drive-over fitting (1000kg @ 5mph)
- This product is Class I and must be earthed
- This product is IP67 rated

INSTALLATION

- Provide power to the required point of installation (refer to BS7671 for correct cabling methods). Suitable IP rated junction boxes should be used where required
- Cut a suitable hole in the mounting surface as per the cut-out details (see Fig.1) ensuring not to infringe with any joists, gas / water pipes or electrical cables. The sleeve should be used for direct mounting in the ground

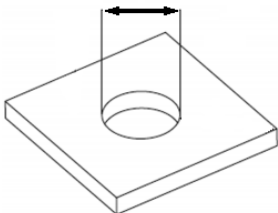
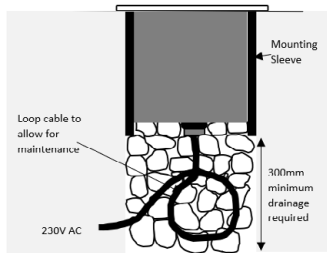
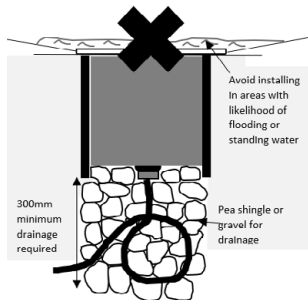


Fig. 1

Product Code	Cut-out diameter (mm)
WGULEN	92
WGULED	92
WHGULED	92
WSGULED	92

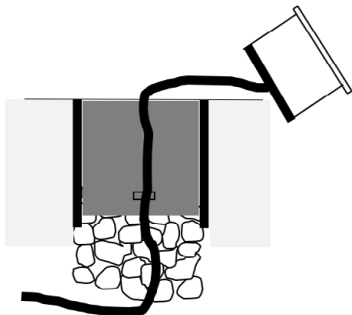
- We recommend not installing in areas where there is a high risk of flooding or areas where water may sit on top of the fitting (see Fig. 2)
- Ensure a minimum of 300mm of drainage is put below the luminaire (see Fig. 2)

Fig. 2



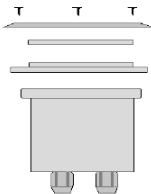
- There must be enough cable below the luminaire to carry out maintenance work (see Fig. 3)

Fig. 3



- With the Allen key provided, remove the hex screws fixing the bezel to the luminaire
- Remove the bezel, gasket, and glass (see Fig. 4)

Fig. 4



- Remove the screws around the top of the fitting and pull away from the plastic sleeve
- Feed appropriate cable through the compression glands at the base of the fitting
- Secure the sleeve (if required) into the mounting surface
- Connect the luminaire to the mains supply ensuring the correct polarity is observed L - Live (brown), E - Earth (green/yellow), N - Neutral (blue)
- Align the countersunk holes in the body of the fitting with the holes in the plastic sleeve
- Secure the luminaire into the sleeve using the screws provided

- Remove the lamp retaining clip inside the top of the fitting, insert a suitable GU10 lamp (not included) into the lampholder, and secure with the lamp retaining clip
- Replace the glass, gasket, and bezel ensuring the seal is in place and not damaged, and refasten the hex screws
- Switch on and check for correct operation
- Should the protective glass be cracked or damaged it should be replaced immediately
- This fitting must not be used without the protective glass installed

WARNING

Care should be taken when installing into high 'clay' content soils which naturally retain water and have poor drainage.

This product is not suitable for installation in or near a coastal or marine environment.

GENERAL

Clean the external surfaces with a damp cloth using a mild solution of detergent and warm water only, do not use aggressive cleaning products or solvents which may damage the product.

Do not use any source of high-pressure washers to maintain or clean this luminaire.

A light film of acid-free oil is recommended after installation and maintained periodically (2-3 times a year) to aid corrosion prevention.

This product is dimmable dependent on lamp type.

This product should be recycled in the correct manner when it reaches the end of its life. Check local authorities for where facilities exist.

WARRANTY

This product has a warranty of 1 year from date of purchase. Failure to install this product in accordance with the current edition of the IEE Wiring Regulations (BS7671), improper use, or removal of the batch code will invalidate the warranty. If this product should fail within its warranty period, it should be returned to the place of purchase for a free of charge replacement. ML Accessories does not accept responsibility for any installation costs associated with the replacement product. Your statutory rights are not affected. ML Accessories reserve the right to alter product specification without prior notice.

**INTERNATIONAL
CONTACT DETAILS**



**230V
50Hz**

IP67



ML
ACCESSORIES LTD



**UK
CA** **CE**



14

ML Accessories Limited LU5 4LT
www.mlaccessories.co.uk