



INSTALLATION & MAINTENANCE MANUAL

BL5BK / BL5G / BL5BLBK / BL5BLG
BLKITBK / BLKITG

GENERAL INSTRUCTIONS

These instructions should be read carefully and retained after installation by the end user for future reference and maintenance.

**These instructions should be used to aid installation of the following products:
BL5BK / BL5G / BL5BLBK / BL5BLG / BLKITBK / BLKITG**

SAFETY

- This product must be installed in accordance with the latest edition of the IEE Wiring Regulations (BS7671) and current Building Regulations. If in any doubt, consult a qualified electrician
- Please isolate mains prior to installation or maintenance
- Check the total load on the circuit (including when this luminaire is fitted) does not exceed the rating of the circuit cable, fuse or circuit breaker
- Please note the IP (Ingress Protection) rating of this product when deciding the location for installation
- This product is Class II double insulated
- This product is IP65 rated

INSTALLATION

Note - If this product is being used in conjunction with an external PIR or sensor, please confirm with the manufacturer of the sensors that they are compatible with LED luminaires.

- Provide power to the required point of installation (refer to BS7671 for correct cabling methods). Suitable IP rated junction boxes should be used where required
- Round cable should be used for the mains supply. The use of flat cable may cause water ingress to the fitting
- Remove the outer frame and the LED gear tray from the luminaire housing (see Fig. 1)

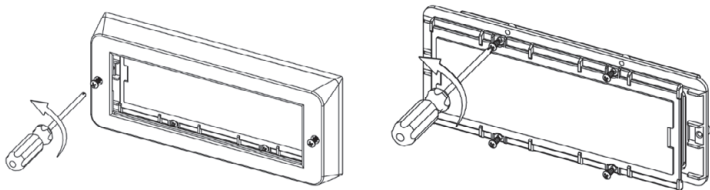


Fig. 1

SURFACE MOUNTING

- Drill two fixing holes in the rear of the luminaire housing, mark the location of the fixing holes and drill ensuring not to infringe with any gas/water pipes or electrical cables
- Feed the mains cable through the grommet on either the rear or the side of the luminaire housing (see Fig. 2) ensuring a good seal is made to retain the IP rating. The luminaire can be fitted horizontally or vertically, enabling cable entry on either side

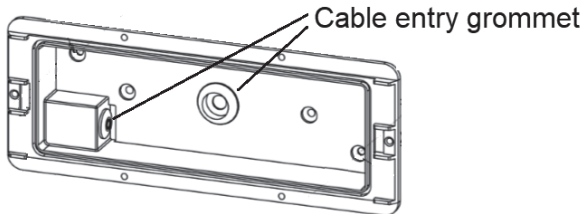


Fig. 2

- Secure the fitting to the surface with the wall plugs, screws, and rubber washers provided

RECESSED MOUNTING

- For recessed mounting using the BLKITxx, cut a suitable hole in the mounting surface ensuring not to infringe with any gas/water pipes or electrical cables
- Remove a knockout from the backbox (see Fig. 3)

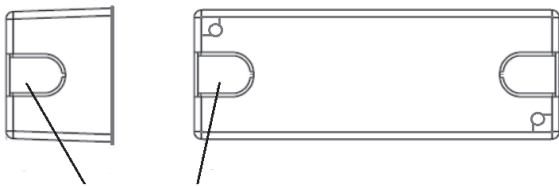


Fig. 3 Cable entry knockouts

- Feed the mains cable into the backbox (at this stage there is no requirement for maintaining the IP rating)
- Fix the backbox securely into the wall flush with the wall surface. Mortar around the backbox if necessary and allow to set before continuing
- Drill two fixing holes on the rear of the luminaire housing to align with the screw pillars in the backbox
- Feed the mains cable through one of the cable entry grommets in the luminaire housing (see Fig. 2) ensuring a good seal is made to retain the IP rating
- Secure the luminaire to the backbox using the M4 screws and rubber washers provided (see Fig. 4)

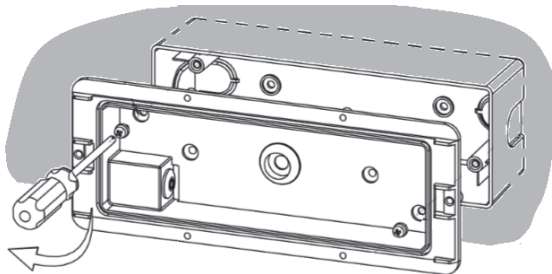


Fig. 4

TERMINATION AND ACCESSORIES

- Connect the luminaire to the mains supply ensuring the correct polarity is observed:
L - Live (brown), N - Neutral (blue)
- Select the desired colour temperature by means of the sliding switch on the LED gear tray (where applicable)
- Refit the LED gear tray onto the luminaire housing ensuring the cable does not press against the terminal block which may cause it to open, and secure it with all four screws ensuring a tight seal is made
- Select a decorative accessory if required, and hold it in place while fitting the appropriate outer frame – the deep frame should be used if surface mounting; the shallow frame if recess mounting
- Switch on and check for correct operation

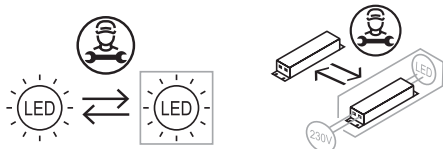
WARNING

This product must be disconnected from the circuit if subjected to any high voltage or insulation resistance testing. Irreparable damage will occur if this instruction is not followed. This product is not suitable for direct installation in the ground, nor in a retaining wall where the ground may become saturated behind.

GENERAL

This product contains a light source of energy efficiency class D to Regulation (EU) No. 2019/2015. (Not applicable to BL5BLxx).

This product contains an LED light source and control gear which can be replaced by a professional.



Clean the external surfaces with a damp cloth using a mild solution of detergent and warm water only, do not use aggressive cleaning products or solvents which may damage the product.

Do not use any source of high-pressure washers to maintain or clean this luminaire.

This product is non-dimmable.

This product should be dismantled for disposal when it reaches the end of its life. Please see website for dismantling instructions.

This product should be recycled in the correct manner when it reaches the end of its life. Check local authorities for where facilities exist.

WARRANTY

This product has a warranty of 3 years (BL5xx) / 1 year (BLKITxx) from date of purchase. Failure to install this product in accordance with the current edition of the IEE Wiring Regulations (BS7671), improper use, or removal of the batch code will invalidate the warranty. If this product should fail within its warranty period, it should be returned to the place of purchase for a free of charge replacement. ML Accessories does not accept responsibility for any installation costs associated with the replacement product. Your statutory rights are not affected. ML Accessories reserve the right to alter product specification without prior notice.



ML Accessories Limited LU5 4LT
www.mlaccessories.co.uk

